

support@saia-pcd.com

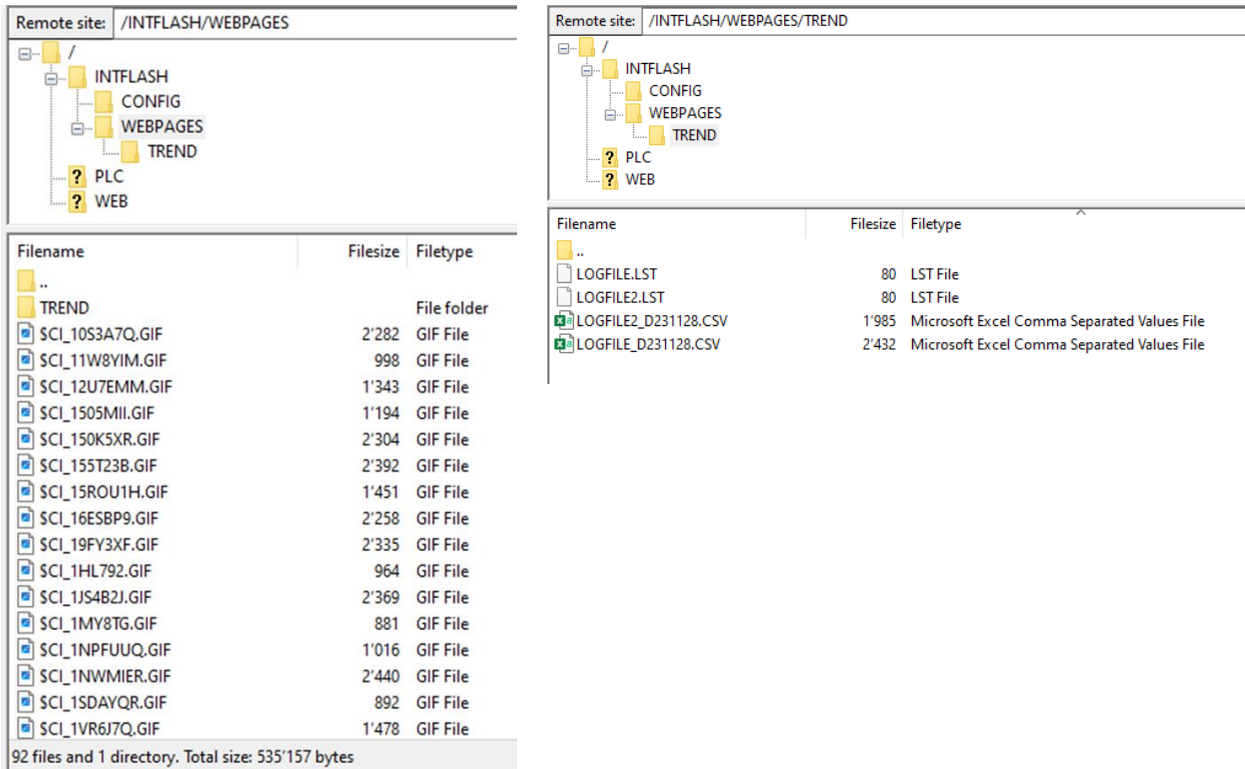
Concern: **How to copy csv-Files (e.g., from HDLog) and Webeditorproject files that are stored in Intflash if you are replacing an internal uSD card using SD Flash explorer**

Date: 30.11.2023

Version 1.0

How to copy csv-Files (e.g., from HDLog) and Webeditorproject files that are stored in Intflash if you are replacing an internal uSD card.

On PCD's that have INTFLASH, among other files, that are automatically stored into Inflash, it's possible to store Webeditor 8 project files like Webpages, images and other files (e.g., HDLog Files).



Filename	Filesize	Filetype
..		File folder
TREND		File folder
SCI_10S3A7Q.GIF	2'282	GIF File
SCI_11W8YIM.GIF	998	GIF File
SCI_12U7EMM.GIF	1'343	GIF File
SCI_1505MII.GIF	1'194	GIF File
SCI_150K5XR.GIF	2'304	GIF File
SCI_155T23B.GIF	2'392	GIF File
SCI_15ROU1H.GIF	1'451	GIF File
SCI_16ESBP9.GIF	2'258	GIF File
SCI_19FY3XF.GIF	2'335	GIF File
SCI_1HL792.GIF	964	GIF File
SCI_1JS4B2J.GIF	2'369	GIF File
SCI_1MY8TG.GIF	881	GIF File
SCI_1NPFUUQ.GIF	1'016	GIF File
SCI_1NWMIER.GIF	2'440	GIF File
SCI_1SDAYQR.GIF	892	GIF File
SCI_1VR6J7Q.GIF	1'478	GIF File

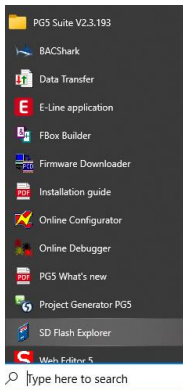
92 files and 1 directory. Total size: 535'157 bytes

Filename	Filesize	Filetype
LOGFILE.LST	80	LST File
LOGFILE2.LST	80	LST File
LOGFILE2_D231128.CSV	1'985	Microsoft Excel Comma Separated Values File
LOGFILE_D231128.CSV	2'432	Microsoft Excel Comma Separated Values File

If the uSD card must be replaced, with the PG5 Project Backup, it's possible to download the complete PG5 project including Webeditor Webpages, images and other required files to the PCD on the new uSD card.

If it's required to copy also other stored data like CSV-files that have been created by the user program and that are stored on the INTFLASH. This can be done over FTP access, if the PCD is still in operation with the original uSD card. You can use FTP (Get command) to extract the data from the PCD with the original uSD card and after the uSD card replacement, you can restore the data with FTP (Put command).

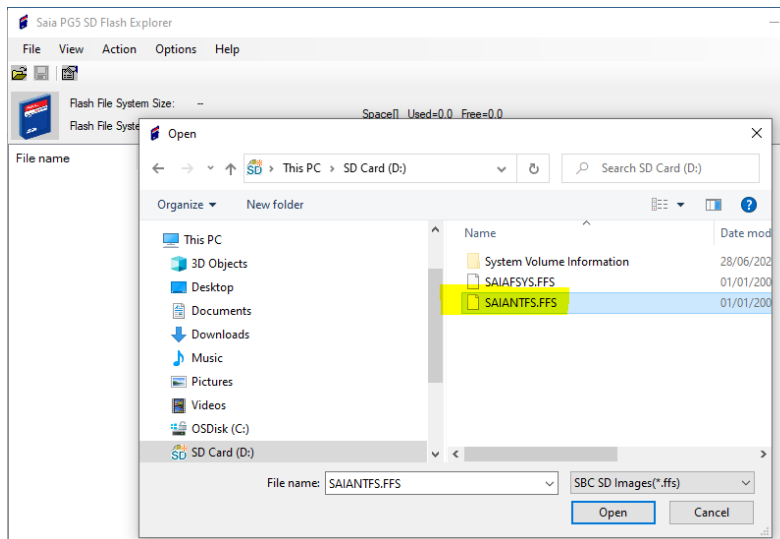
Another way of moving data, to the new SD card, is using the tool SD Flash explorer which is part of PG5 Suite.



Here is a step-by-step procedure for data backup / restore with SD Flash explorer.

1. Remove the original SD card using the procedure that is described for the PCD type you have, in the document
"Replace uSD memory card on PCD3.Mxxxx"
Place the uSD card with an adaptor (uSD -> SD) into the laptop.
Start SD Flash explorer
Select
File -> Open

Select the file **SAIANTFS.FFS**
(This file contains the "INTFLASH" Filesystem)

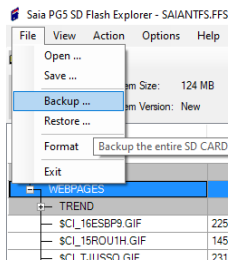


Click "Open"

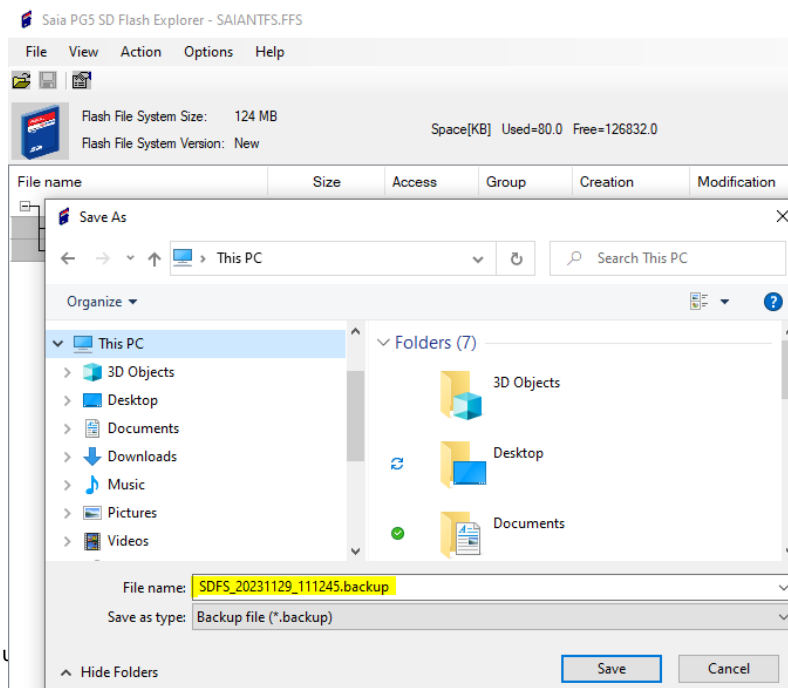
The content of the file will be displayed:

File name	Size	Access	Group	Creation	Modification
SD File System					
CONFIG		RwX	CONFIG	28.11.2023 11:01	
WEBPAGES		RwX	WEBG	28.11.2023 11:01	
TREND		RwX	WEBG	28.11.2023 12:49	
LOGFILE_D231128.CSV	2432	RW	WEBG	28.11.2023 12:49	28.11.2023 14:26
LOGFILE.LST	80	RW	WEBG	28.11.2023 12:49	28.11.2023 12:49
LOGFILE2_D231128.CSV	1985	RW	WEBG	28.11.2023 13:54	28.11.2023 14:26
LOGFILE2.LST	80	RW	WEBG	28.11.2023 13:54	28.11.2023 13:54
\$CI_16ESBP9.GIF	2258	RW	NO_GROUP	28.11.2023 14:04	28.11.2023 14:04
\$CI_15ROU1H.GIF	1451	RW	NO_GROUP	28.11.2023 14:04	28.11.2023 14:04
\$CI_TJUSSO.GIF	2319	RW	NO_GROUP	28.11.2023 14:04	28.11.2023 14:04
\$CI_HCVYDX.GIF	2393	RW	NO_GROUP	28.11.2023 14:04	28.11.2023 14:04
\$CI_I1P3MC.GIF	2362	RW	NO_GROUP	28.11.2023 14:04	28.11.2023 14:04
\$CI_19FY3XF.GIF	2335	RW	NO_GROUP	28.11.2023 14:04	28.11.2023 14:04
\$CI_1NWMIER.GIF	2440	RW	NO_GROUP	28.11.2023 14:04	28.11.2023 14:04
\$CI_11WBYIM.GIF	998	RW	NO_GROUP	28.11.2023 14:04	28.11.2023 14:04
\$CI_DBRPSN.GIF	979	RW	NO_GROUP	28.11.2023 14:04	28.11.2023 14:04
\$CI_51A6ME.GIF	2348	RW	NO_GROUP	28.11.2023 14:04	28.11.2023 14:04
\$CI_1YHDX9O.GIF	2768	RW	NO_GROUP	28.11.2023 14:04	28.11.2023 14:04

2. With
File -> Backup



You can now save the backup-file on the disk of the laptop.



copy

3. You must put the new uSD card into the PCD using the procedure that is described in the document “Replace uSD memory card on PCD1.Mxxxx” into the PCD.

(Note, if you had to remove screws for removing the cover, you don't have to put the cover and the screws yet, as we will remove the uSD card again)

Powerup the PCD and wait until the PCD has booted up -> Run LED red.

After finishing this procedure, you must power off the PCD and you must remove the new uSD card. (Proceed the same way as for the removing the original uSD as described in the document “Replace uSD memory card on PCD1.Mxxxx”)

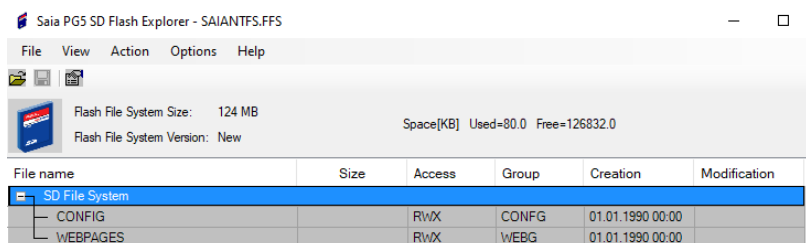
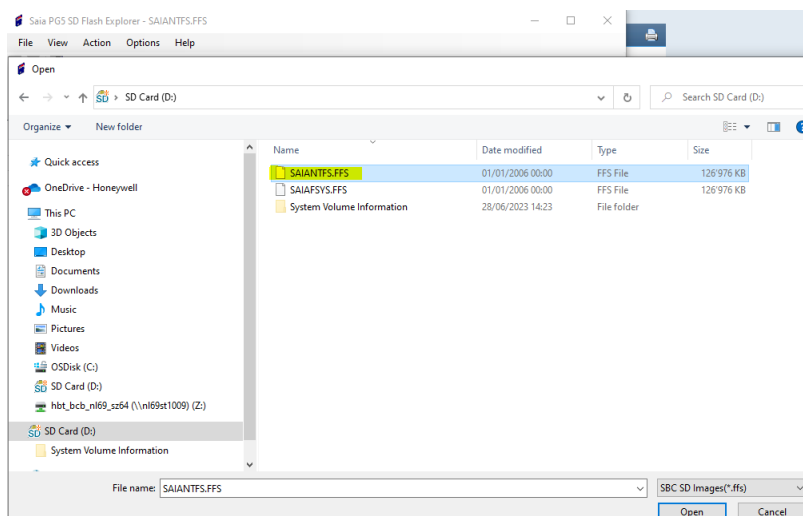
4. Place the new uSD card with an adaptor (uSD -> SD) into the laptop.

In SD Flash explorer

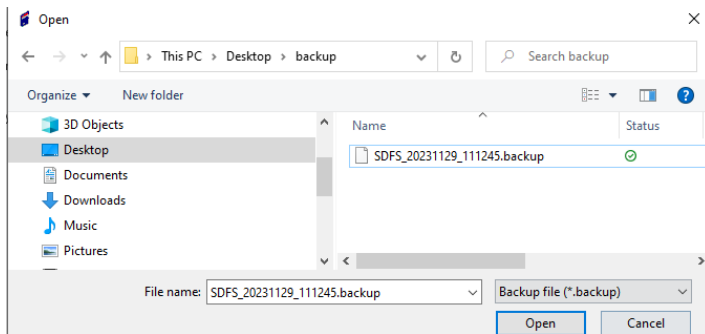
Select

File -> Open

Select the file **SAIANTFS.FFS**



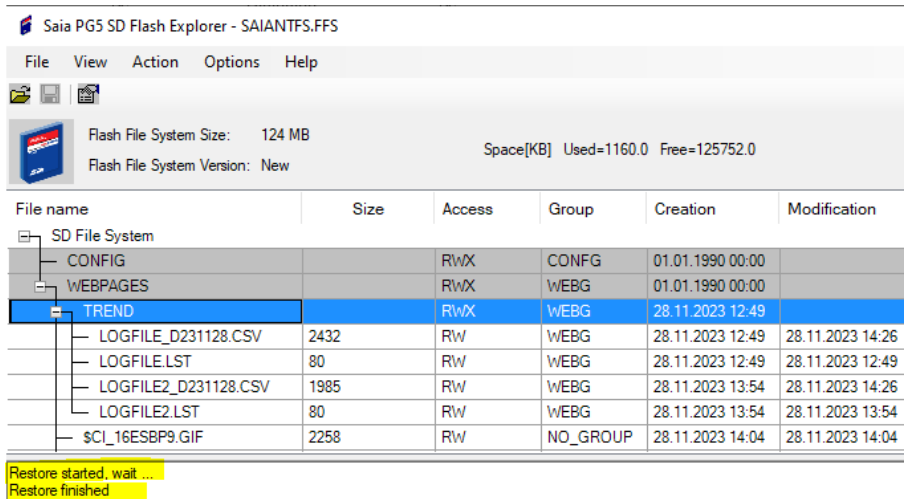
Choose
 File -> Restore



You have to select the SDFS_*.backup file that you have created before
 This file contains the "INTFLASH" Filesystem

Click "Open"

The files from the backup are restored to the uSD card.



Choose
 File -> Save

- Now you can remove the uSD card, put it back to the PCD using the procedure described in the document "Replace uSD memory card on PCD1.Mxxxx"). You can finish the procedure, mount the cover and continue with the commissioning of the PCD.