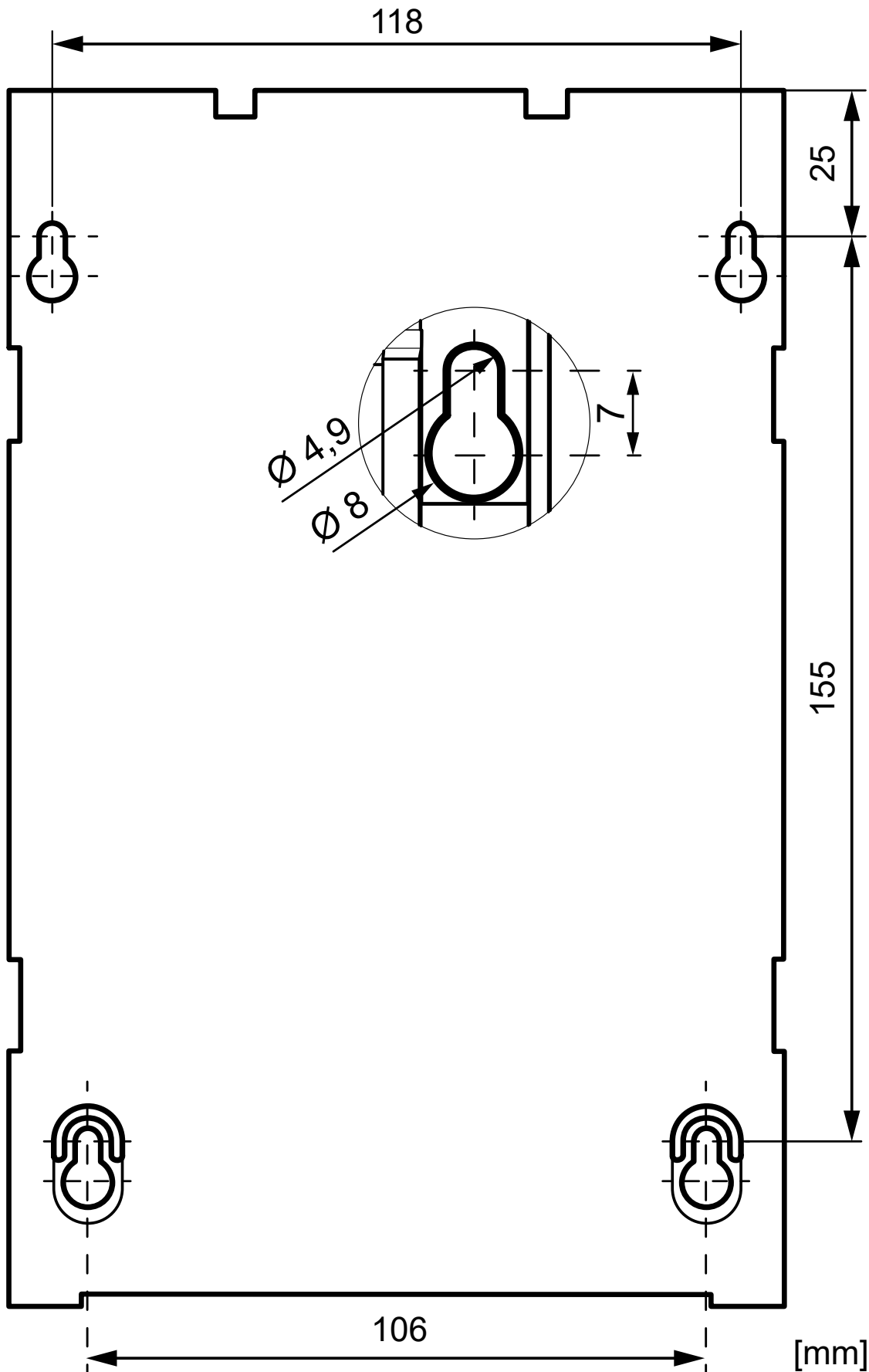


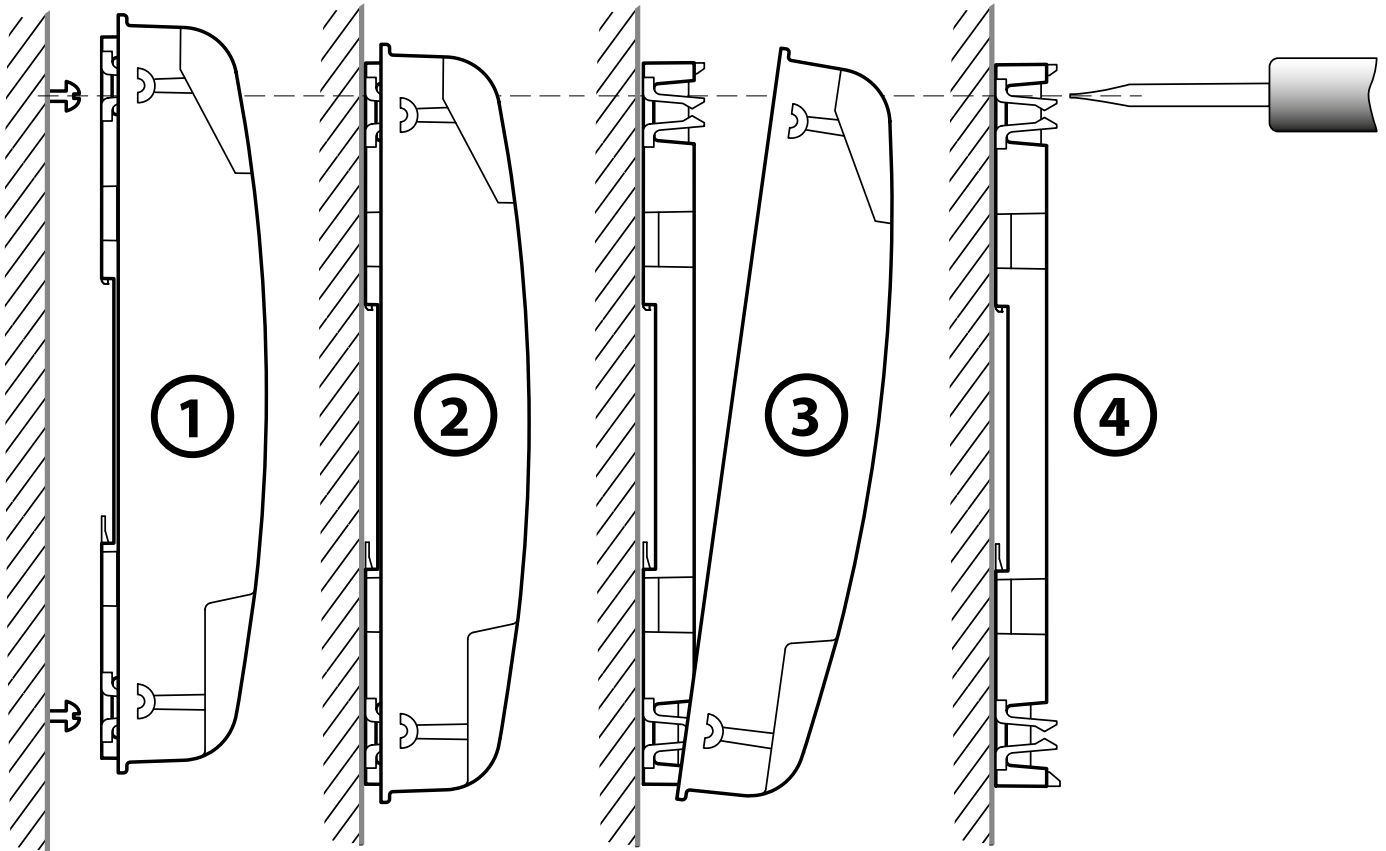
## Drill hole pattern for PCD1.M2020, PCD1.M2110R1, PCD1.M2120 and PC1.M2160

Print - Customize page and options: **actual size**



## Mounting on a Flat Surface

### Screw mounting:



1. Install all four screws, tightening them only to the extent that the PCD can still be suspended from them.
2. Suspend PCD from screws.
3. Remove the housing cover  
(grasp the edge of the housing cover with your fingertips and pull it towards you).
4. Fully tighten the two upper screws.

#### Further information and support

Further information are available on [www.sbc-support.com](http://www.sbc-support.com).

#### Disclaimer

The plant engineer contributes his share to the reliable operation of an installation. He is responsible for ensuring that controller use conforms to the technical data and that no excessive stresses are placed on it, e.g. with regard to temperature ranges, over voltages and noise fields or mechanical stresses. In addition, the plant engineer is also responsible for ensuring that a faulty product in no case leads to personal injury or even death, nor to the damage or destruction of property. The relevant safety regulations must always be observed. Dangerous faults must be recognized by additional measures and any consequences prevented. Consistent use of the diagnostic elements of the PCD, such as the watchdog, exception organization blocks (XOB) and test or diagnostic instructions shall be made.