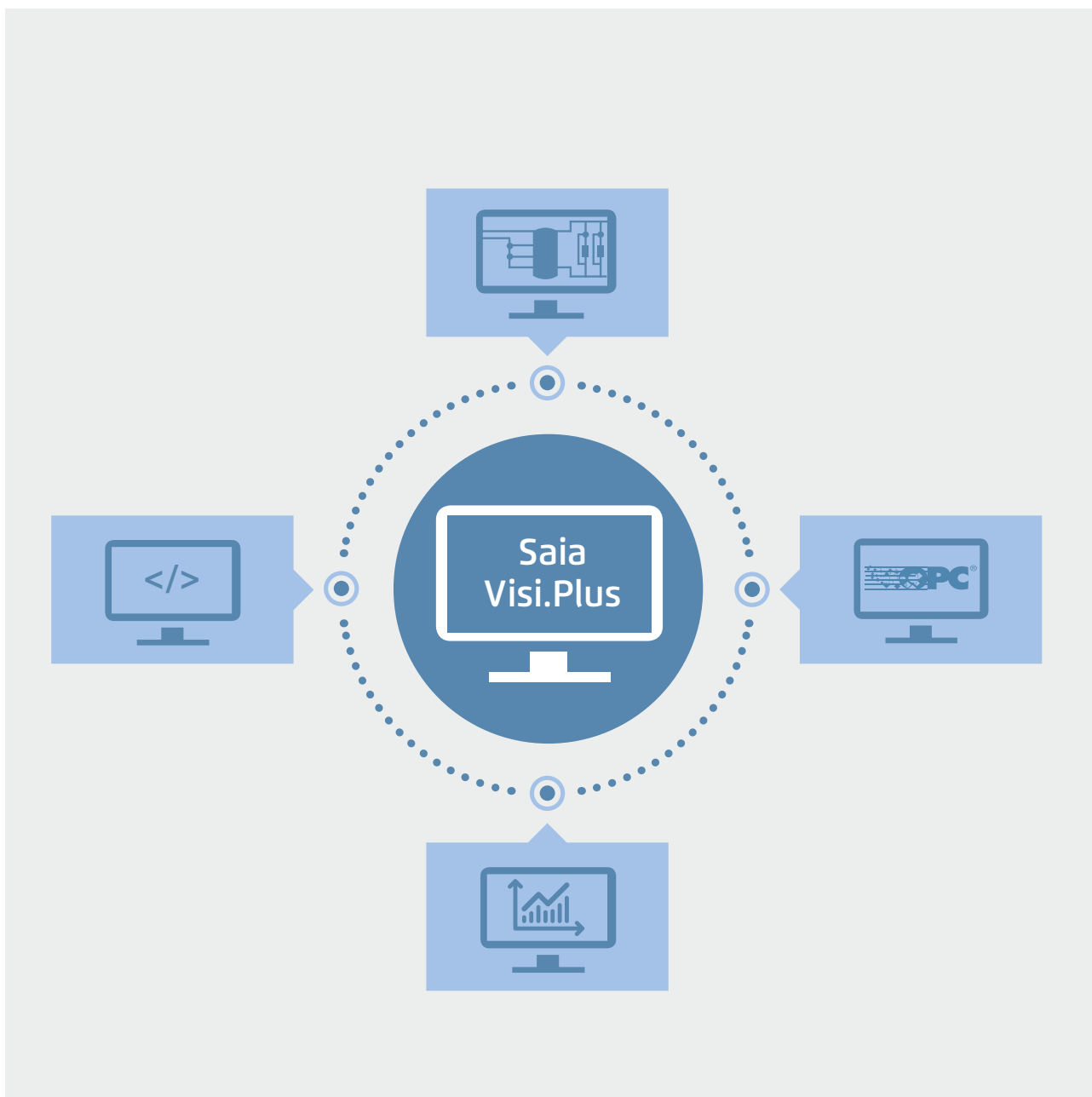


1.2.2 Saia Visi.Plus | Classic control/management system



1 SBC software

2 Communication & Interaction

3 SBC S-Web technology

4 Room automation

Saia Visi.Plus

Software package for the visualization and solution of management system tasks

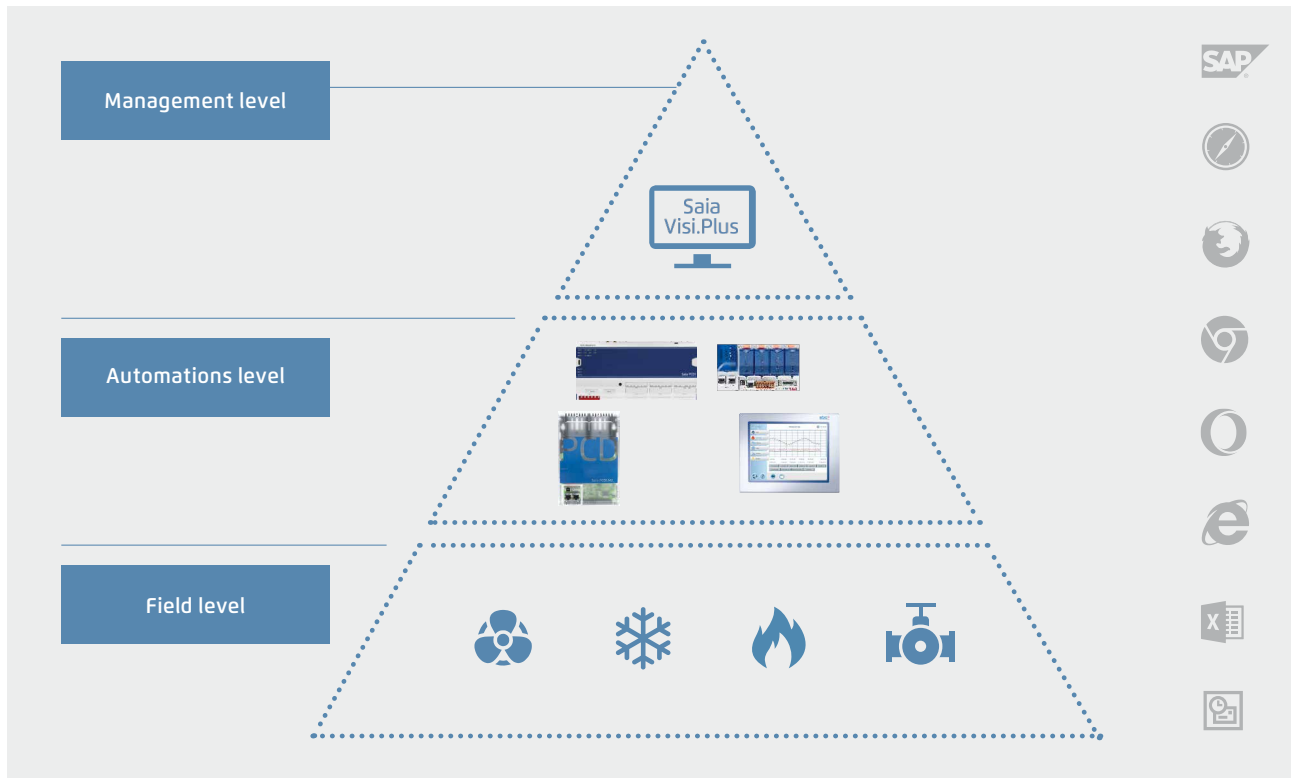
Saia PCD® automation stations allow complete freedom when designing the management level. Everything that the customer will find useful is also possible. There is practically nothing that cannot be done.

For our company, this is not just a matter of paying lip service; it is of paramount strategic importance. We specialize in technology for the automation level. Our strength lies in not being dominant anywhere in the market, nor being a universal supplier globally. Consequently, success for us depends on an ability to work well with all professional systems and serious software producers on the market. At the same time, we also offer very attractive solutions in the area of the management level as an alternative to the classic approach of the usual automation pyramid.

Software package for visualizing and solving management tasks – for reliable, efficient and economical project implementation in association with Saia PCD® automation systems.

Main characteristics of Visi.Plus

- ▶ Perfectly integrated and optimized for Saia PG5® and Saia PCD®, successfully used world-wide since 2001
- ▶ Reduction of commissioning and maintenance costs due to clarity of handling and freely available Engineering Edition
- ▶ The integral web server allows all process data to be displayed in the web browser without added expenditure



The open philosophy of Saia PCD® has also been consistently applied to Visi.Plus. Interfaces to all the usual applications have either been already integrated or can be accessed retroactively.

Visi.Plus

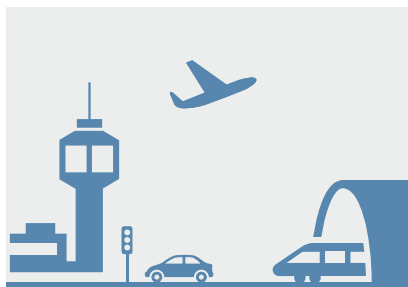
The management system Visi.Plus is successfully used in various areas



Building technology

Visi.Plus is represented in buildings for all types of use:

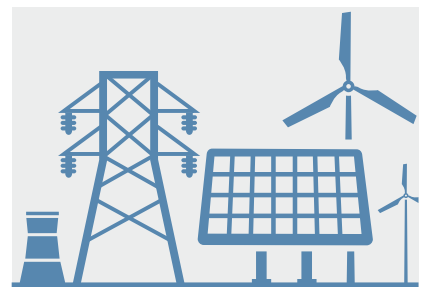
- ▶ Shopping centres
- ▶ Hospitals
- ▶ Office buildings



Transport technology

Visi.Plus has been designed for transport engineering tasks:

- ▶ Tunnels (rail/road)
- ▶ Airports
- ▶ Heating of railway points



Energy technology

Visi.Plus reliably distributes and measures heat and energy data:

- ▶ Combined heating systems
- ▶ Energy measurement server
- ▶ Solar plant

Engineering Edition

From the very start of a project, Visi.Plus provides helpful support and valuable services that save time and costs. The Engineering Edition is included within PG5 and may be used for commissioning and optimization. Activation of the runtime management system takes place when a licence is purchased. All control visuals and settings are transferred automatically. These functions are available immediately with manipulations:



Alarming

- ▶ Alarm list incl. history
- ▶ Forwarding via email or SMS
- ▶ End user control



Control panels

- ▶ Complete system overview
- ▶ Easy to configure
- ▶ Optimization by Visualization



Trends

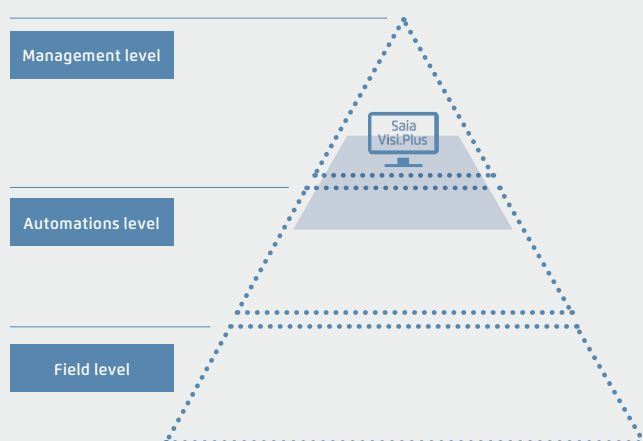
- ▶ Control loop charting
- ▶ Control of optimisation
- ▶ Confirmation for the end user



Web

- ▶ Remote access available immediately
- ▶ Customer care assistance
- ▶ Control by the planner/end customer

Visi.Plus as a commissioning and optimization tool

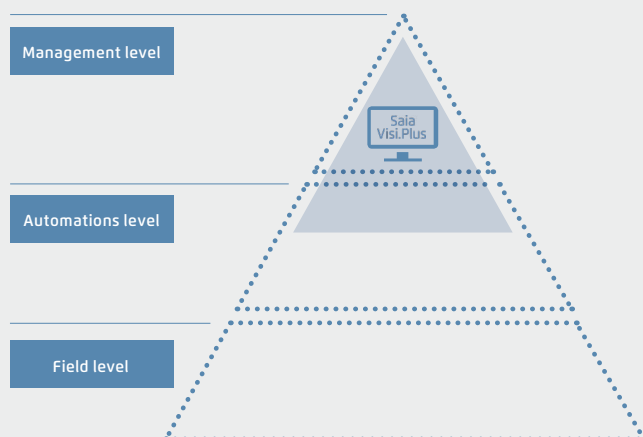


Advantages of Visi.Plus as an aid to commissioning/optimization

- ▶ Immediate trend and alarm data in overview
- ▶ Reduction of commissioning time due to clarity of manipulation
- ▶ Development environment included in Saia PG5[®] and fully functional
- ▶ Easy checking of all parameters and adjustments

One small step for the integrator – enormous benefits for the operator

Visi.Plus as a complete management system



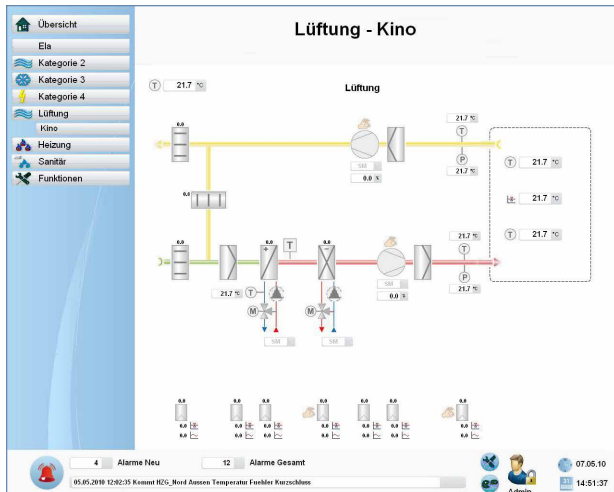
Advantages of Visi.Plus as a management system

- ▶ Open structure for linking to standard systems (OPC, BACnet, Modbus, SQL, MS Office)
- ▶ Scalable architecture for wide spectrum of uses at optimized price
- ▶ Perfectly integrated, dedicated software for Saia PG5[®] and Saia PCD

Operator programs

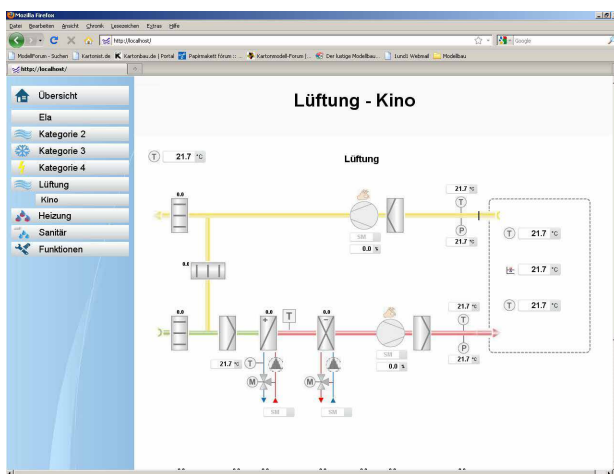
Visual display and graphical editor

All relevant parts of the facility can be presented to the user in the most appropriate way with the powerful graphical editor. The use of vector and bitmap graphics allows both overviews and detailed information to be displayed. The graphical editor also helps with visualisation in run-time mode. This means that the user can switch to editor mode at any time (via password) to make corrections and changes.



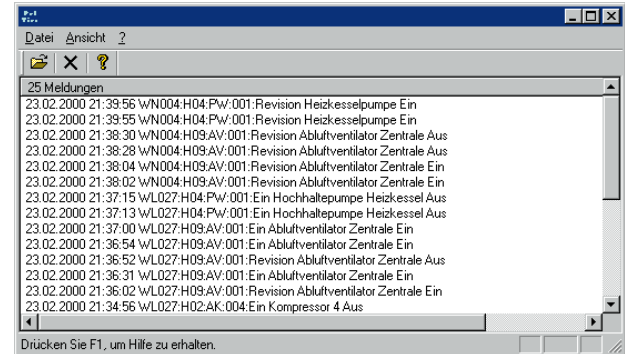
Web-Server

All diagram pages created are automatically stored as web pages. All generated pages can be displayed and operated using a browser, by activating the Visi.Plus web server.



Logging

This module logs and stores all events at the user level. The log viewer, with its integral filter functions, allows all important events to be displayed in the most appropriate way to the user.



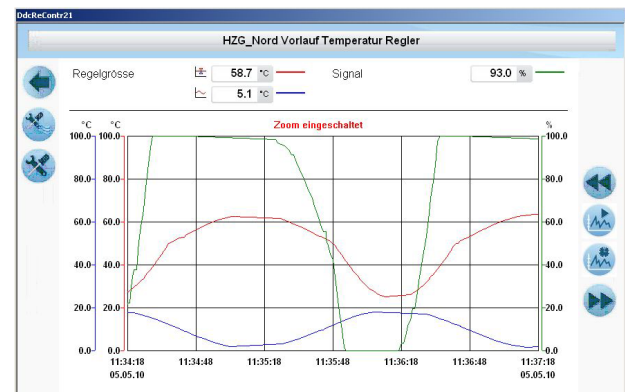
Alarm management

Alarm management is an essential constituent of any building management system. With Visi.Plus it is possible, by observing threshold values, to display all relevant points of information for the user in a plain-text alarm window. Two separate alarm lists provide a better overview. The first gives an overview of all alarms; the second enables all current alarms to be examined.



Trend projection

With this module you can, for example, receive a monthly summary energy balance sheet for all consumers in a building. Whether you have to monitor the consumption of water, electricity or heat, this trend analysis provides you with the necessary overview to enable suitable measures to be initiated.



Communication drivers

SDriver

The SDriver is used for communication with Saia PCD® automation stations based on the S-Bus protocol. The driver supports all types of communication, e.g. serial interface, modem, USB and TCP/IP. Because the SDriver is based on SBC's own SCOMM-DLL, all PG5 tools can be used in parallel with it. The SDriver has a mechanism to optimize data traffic using automatically generated telegram packets. A further optimization is achieved by prioritizing telegrams according to categories, such as alarms, actual values, or setpoints.

PCDDriver

This new driver can be used to readout data from PCD's into Visi.Plus as an alternative to SDriver. The PCDDriver communicates with the controller via Ethernet. The SComm.dll is no longer used. It doesn't need to be licensed separately. The SDriver license options are also valid for the PCDDriver.

Visi.Plus as OPC client

To enable the neutral integration of automation systems even from other manufacturers, Visi.Plus offers an OPC client that reads data from the OPC server of a third-party supplier and automatically enters it in the Visi.Plus DMS database. The user can then access it for further processing in the Graphical Editor or Alarm Manager, or for storage in the history database.

BACnet Treiber

This driver has been developed completely independent of the system, this allows the scanning and the preparation of any objects. Optimal integration is achieved however, with Saia PCD® products. This driver enables communication between one or several BACnet-capable devices and the Visi.Plus.

System requirements

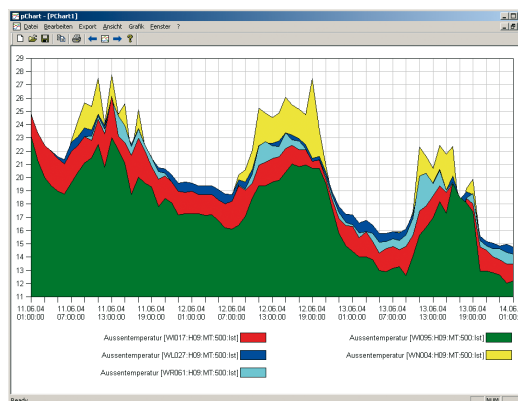
Visi.Plus requires the following minimum configuration:

- ▶ Windows 7, Windows 10
- ▶ Windows Server 2008 R2, Windows Server 2012
- ▶ Processor Core 2 Duo

Add-on programs

Analysis of trend data (Chart)

If the user wishes to display or export trends, however they have been compiled, Chart is the tool to use. The trend data can be displayed in a variety of colours and different scales.



Mobile Alarm (MALM) Remote alarms via email/SMS



When monitoring technical building installations it is necessary to guarantee that, in the absence of service personnel, fault messages are forwarded quickly and safely. Direct diagnosis of the fault message is also possible via remote dial-in, thus avoiding unnecessary journeys by service personnel. The alarm is sent via SMS or email.

MALM ESPA 4.4.4

Alarms can be forwarded to telecommunications systems with an ESPA 4.4.4 interface (serial, type RS-232), to be output to the display of a telephone within the local telephone network.

pCalc

Calculation for energy analysis and monitoring of installations, up to 1000 formula with each 16 variables

- ▶ 1024 MB RAM (the higher the number of DMS data points, the more memory is required)
- ▶ Hard disk with at least 1 GB free memory
- ▶ CD-ROM drive (poss. external data backup (CD writer))

Order information

Three basic Visi.Plus versions are available to system integrators. The appropriate package can be implemented for the client and expanded with add-on modules depending on the task requirements and the complexity of the systems.

Saia Visi.Plus packages in German and English (1 licence per project)

PCD8.VP-MINI	Visi.Plus Mini - Mini package Data management system, database system, graphic editor, engineering tool, scheduler program, trend and alarm capture and S-driver for 1,000 data points (approx. 65 hardware data points)
PCD8.VP-BASIC	Visi.Plus Basic – basic package Data management system, database system, graphic editor, engineering tool, scheduler program, trend and alarm capture, MALM remote alarms via SMS/e-mail, PRT access logging and S-driver for 10,000 data points (approx. 650 hardware data points)
PCD8.VP-STD	Visi.Plus Standard – standard package Data management system, database system, graphic editor, engineering tool, scheduler program, trend and alarm capture, MALM remote alarms via SMS/e-mail, PRT access logging, pChart trend displays, Web Server 2 and S-driver for 100,000 data points (approx. 6,500 hardware data points)
PCD8.VP-UPGRADE	Visi.Plus Update – Version update (according to customer Visi.Plus package)
PCD8.VP-SWDONGLE	Software Dongle – a software dongle is a computer file that can be used in place of the hardware dongle. The software dongle is bound to a project license and the computer (IP address and local disk)

S-Driver options – Add-on for Visi.Plus packages

PCD8.VP-SBUS10K	Option for Visi.Plus packages S-Driver for 10,000 additional data points (approx. 650 hardware data points)
PCD8.VP-SBUS25K	Option for Visi.Plus packages S-Driver for 25,000 additional data points (approx. 1,625 hardware data points), not possible with the Mini package
PCD8.VP-SBUS50K	Option for Visi.Plus packages S-Driver for 50,000 additional data points (approx. 3,250 hardware data points), not possible with the Mini package

Module options – Add-on for Visi.Plus packages

PCD8.VP-GE2	GE2 – Graphic editor runtime system, two additional operator stations
PCD8.VP-GE5	GE5 – Graphic editor runtime system, five additional operator stations
PCD8.VP-GE10	GE10 – Graphic editor runtime system, ten additional operator stations
PCD8.VP-PRT	PRT – Access logging (included in Basic and Standard package)
PCD8.VP-PCHART	pChart – Trend display tool Each user (1...10) costs one full pChart licence (one user included in the Standard package)
PCD8.VP-PCALC	pCalc – Calculations for energy analysis and system monitoring, up to 1,000 formulas with 16 variables each
PCD8.VP-MALM	MALM – Remote alarms via SMS/e-mail (included in Basic and Standard package)
PCD8.VP-MALMESPA	MALM ESPA 4.4.4 – Remote alarms (sending) via ESPA protocol (add-on option for MALM)
PCD8.VP-ESPA	ESPA 4.4.4 – Receive alarms and messages via ESPA protocol to Visi.Plus
PCD8.VP-WA2	Web Server 2 – based on HTML5 for 2 additional simultaneous connections
PCD8.VP-WA5	Web Server 5 – based on HTML5 for 5 additional simultaneous connections
PCD8.VP-WA10	Web Server 10 – based on HTML5 for a maximum of 10 simultaneous connections
PCD8.VP-WA-UPGR	Update Web Server – Update from old to new Web Server

Other drivers

PCD8.VP-OPC1	OPC1 – OPC client Client for 250 data points
PCD8.VP-OPC2	OPC2 – OPC client Client for 1,000 data points
PCD8.VP-OPC3	OPC3 – OPC Client client for 10,000 data points
PCD8.VP-BACNET	BACnet – driver for up to 2500 BACnet objects
PCD8.VP-BACNET10	BACnet – driver for up to 10,000 BACnet objects