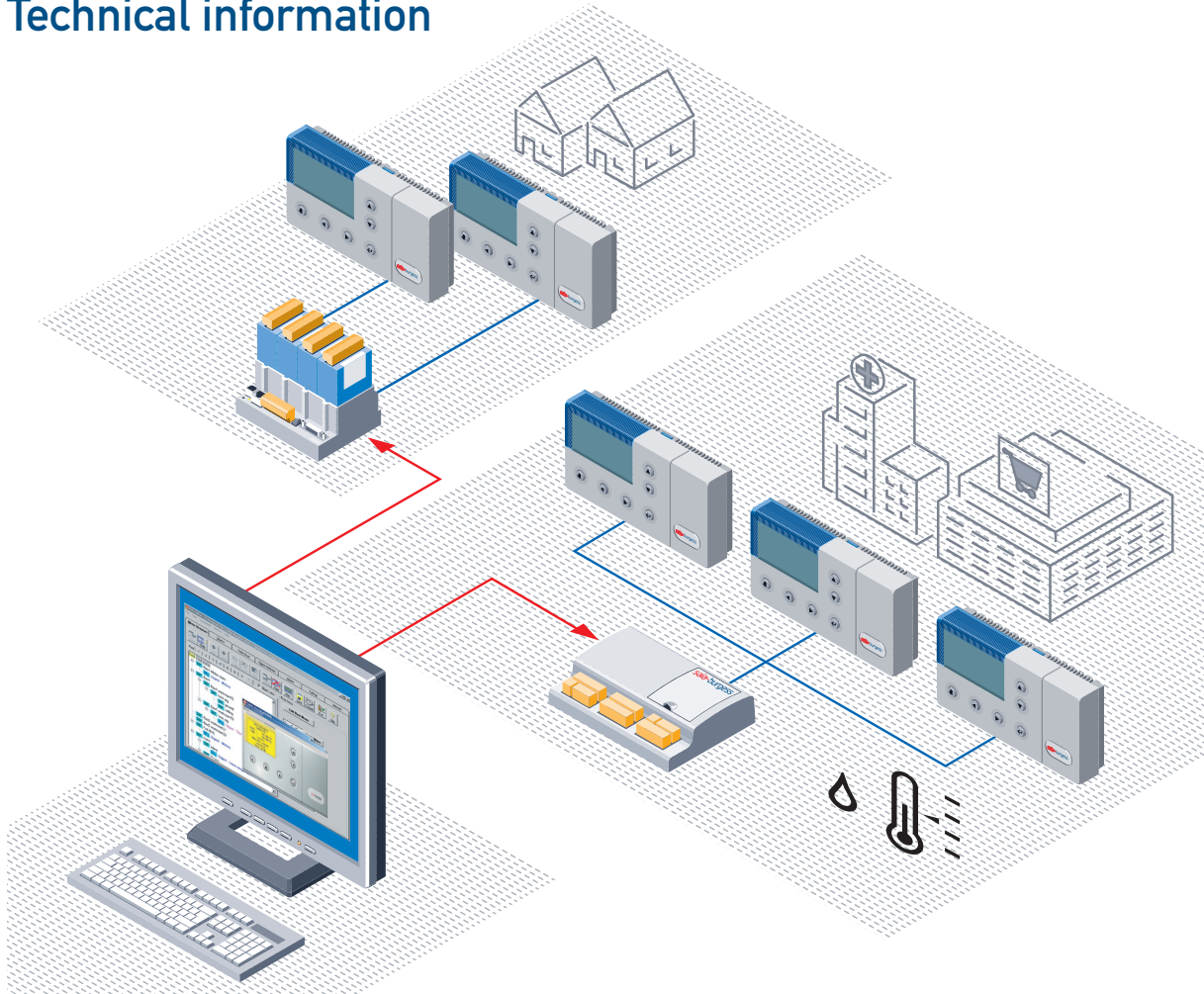


Technical information



New individual Room Control Panel Saia® PCD7.D290

Controls Division

Any individual room control concept must have components that can be quickly adapted to the requirements of individual user groups. The latest product of the DDC-Plus portfolio in individual rooms is the room control unit PCD7.D290.

The outstanding features of this room control device are:

- User-friendly housing in white plastic
- Large graphic displays with 128x64 pixels and (8x20 characters) LED backlighting
- Six integral keys with tactile action point & with LEDs backlight allow individual adaptation to all necessary room parameters
- Temperature and humidity sensors are built-in, so that the external controller can directly influence room climate
- Connection to the controller level is via a point-to-point or bus link. The PLC takes over all control and regulation tasks
- Mounting should take place directly on the wall

HMI-Editor: Add-on tool for the PG5 programming package

In order to satisfy all user needs, the PCD7.D290 has been fully integrated into the HMI-editor. This tool allows the comfortable configuration of the product and representation of text or symbol information on the display.

Icon-Editor: installed automatically in the PG5 programming package

The icon editor is the only tool for creating a library of icons to use in the HMI-Editor.

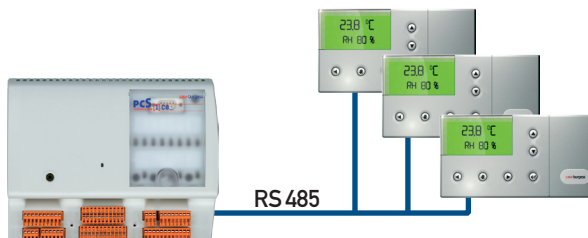
Some examples of application with Saia®PCD and Saia®PCS

Examples using one PCS1 with embedded ports

Application 1 with x1 PCD7.D290
 RS232 RTS/CTS
 Using graphic capabilities (Icons).



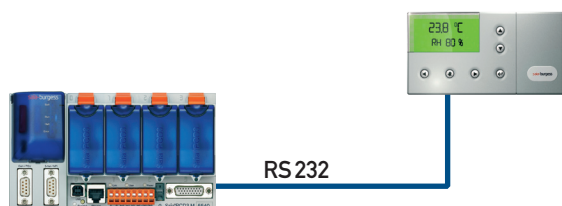
Application 2 with x3 PCD7.D290
 RS485 (bus mode)
 No graphic capabilities.
 When one terminal is active, the others are busy.



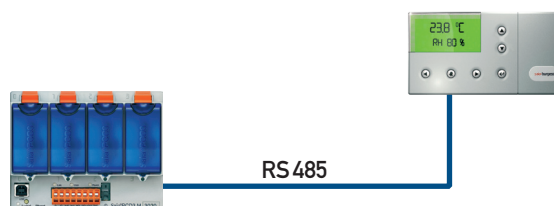
Nbr of D290	Port 0	Port 1
x1	RS 232	
Up to 6		RS 485 (bus mode)

Examples using one PCD3.M3

Application 3 with x1 PCD7.D290
 RS232 without handshake
 Using graphic capabilities (Icons).



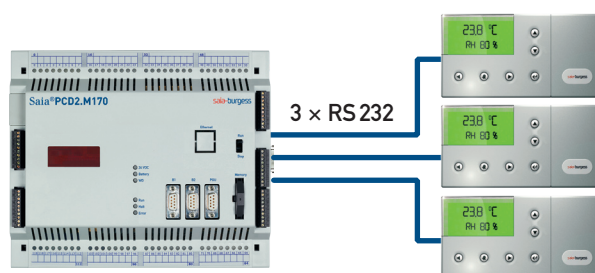
Application 4 with only x1 PCD7.D290
 RS485 (bus mode)
 No graphic capabilities.



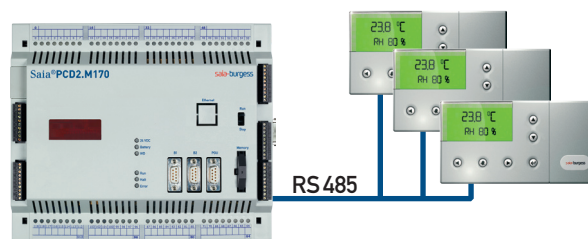
Nbr of D290	Port 1 (F120)	Port 2
x1	RS 232	
Up to 6		RS 485 (bus mode)

Examples using one PCD2.M170

Application 5 with x3 PCD7.D290
 RS232 RTS/CTS
 Using graphic capabilities (Icons).
 When one terminal is active, the others are busy.



Application 6 with x3 PCD7.D290
 RS485 (bus mode)
 No graphic capabilities.
 When one terminal is active, the others are busy.



Nbr of D290	Port 0	Port 1	Port 1	Port 2 to 5
Up to 6	RS 232	RS 232		RS 232
Up to 6			RS 485 (bus mode)	

HMI-Editor. The main tool to create an HMI application

It is particularly recommended to use the HMI-Editor to create an HMI application for PCD7.D290 but also for the range of Saia® PLC based terminals and PCS1 with integrated display.

With the HMI-Editor you can create an HMI menu tree, define password levels, allow display and editing of variables, access internal FBox parameters (FUPLA) and create an alarm list. We can integrated in your programme static and dynamic icons.

Multi terminals topology: only one terminal can be in use at a time. When a user logs onto one terminal, the others are put in a busy state.

Some functions of the HMI-Editor are not supported by the bus topology (RS 485).

Menu structure and organization

Unlike standard commercial editors, the operator's desktop editor has a hierarchical structure. Menus point to submenus, which in turn point to other submenus, and so on. This sequence of branches constitutes the menu structure. At the lowest level, the last menu or submenu item points to an OBJECT.

Resources

The variables (which are associated with elements and comprise the objects) are imported automatically from the PG5.

Importing predefined objects

The import/application button is used to import an object library (HeaVAC library, modem library) with all its predefined texts.

Icons and icon management

An icon is a predefined figure displayed on the screen Status bars have a fixed number of 6 icons.

Up to 20 icons can be imported to an HMI file. Menu items can be created with an icon (static icon) and 2 text lines. Dynamic icons can be switched by means of a flag, or selected via a register value.

Language manager

The language manager allows all text to be edited simultaneously in 5 languages in the same HMI project.

Alarms and alarm settings

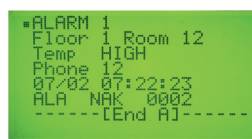
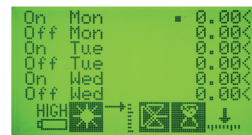
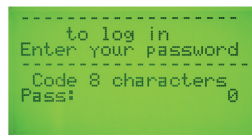
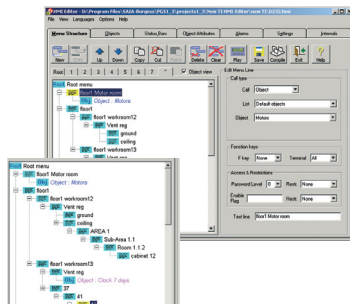
The alarm tab is used to create a list of alarms associated with flags, and to define alarm messages in the buffer.

Password and Enable flag

10 password levels of 4 or 8 characters (or of variable length).

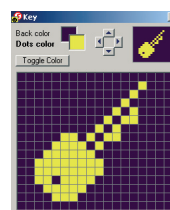
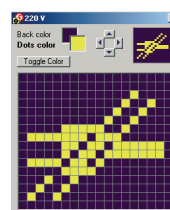
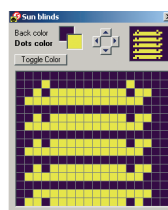
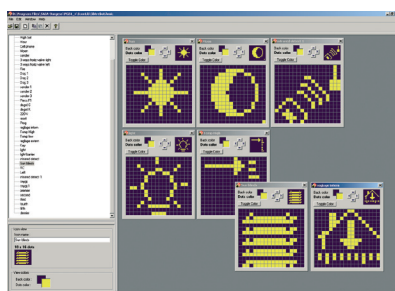
Importing HMI projects

This command allows any part of an existing HMI project to be imported into a new HMI project.



Icon-Editor: The tool for creating a library of icons

The icon editor is installed automatically in the PG5 when the HMI-Editor is installed. It will be found in the pull down «Tools» menu. The icon editor is the only tool for creating a library of icons to use in the HMI-Editor. The icon editor always works with just one library at a time and can contain a large number of icons. When the icon editor is opened, one icon library is accessible by default. An icon is a rectangle of 18×16 pixels. Icons are very simple to create and freely definable for the requirements of each application.



PCD7.D290

Technical Data



Display

Type	Graphics display
Size	8 × 20 characters - 128 × 64 pixel
Character size (W×H)	2.5 × 3.5 mm
Character set	ASCII (West European)
Contrast setting	By setup or software
Backlight	LED on/off

Keyboard

Total keys	6
Autorepeat keys	yes
Buzzer	yes
LED	6 as backlight through the keys

Memory (PCD/PCS1)

	depending on PLC
--	------------------

Clock

	on PLC
--	--------

Communication Interface

to Saia® PCD or PCS	RS 232 / RS 485
Protocol	point to point / bus bus
Handshake	Without / with RTS/CTS

Interfaces

NTC temperature sensor	0°...45° C
Capacitive humidity sensor	5...95% RH

Software tool

Using PG5 resources	HMI-Editor
Graphical display capabilities	yes ¹⁾
Autorepeat function	yes
LEDs controls	yes
Buzzer controls	yes ²⁾

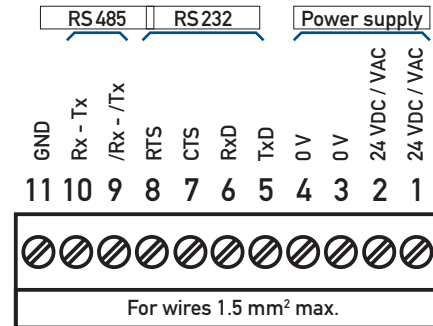
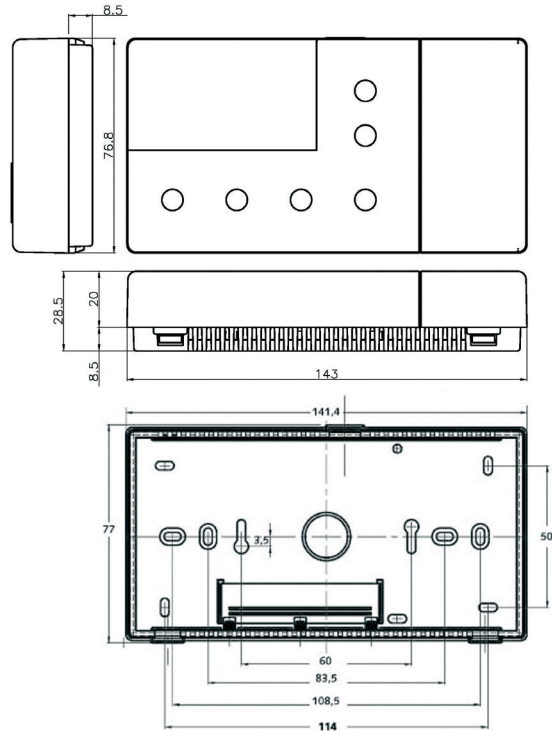
Technical data

Power supply	19...30 VDC / VAC
Power consumption (24 VDC)	30...150 mA with backlight
Operating / storage temperature	0...50° C / -25°...70° C
Permissible humidity	5...95% RH, without condensation
Front protection	IP 40

¹⁾ Icons only with RS 232

²⁾ Only with RS 232

Dimension and montage



Ordering Information

Type	Description	Weight
PCD7.D290	Individual Room Control Panel with graphic display for wall mounting	200 g
PG5	Complete PG5 package, including HMI-Editor, Icon-Editor	
Manual	Ref.: 26/841	

Contact

Switzerland and international

Saia-Burgess Controls Ltd.
 Bahnhofstrasse 18, CH-3280 Murten, Switzerland
 T +41 (0)26/672 71 11, F +41 (0)26/672 74 99
 www.saia-pcd.com, pcd@saia-burgess.com

Product support,
 Technical reference website:

www.sbc-support.ch

This flyer was received from: