

Saia PCD® Web Panel CE PCD7.D51xxTL010 Control panel for web visualisations with Windows® CE



The Saia PCD7.D51xxTL010 series Web Panels are specially designed for the needs of web visualisations, and are pre-configured with all the applications and software tools needed for this. No need for complex installation and software updates - Saia PCD® Web Panels are ready for use right away. There are two display sizes available: 10" and 12" with 800 × 600 resolution.

- Pre-configured and ready for use for web visualisations, optimised for Saia PCD® controls
- 10"/12" colour TFT display with 16.7 million colours and touchscreen operation
- AMD Geode LX800 processor
- 256 MB DRAM main memory
- 2x Ethernet
- No fan or hard disk

The Saia PCD® Web Panel CE PCD7.D51xxTL010 product family is based on AMD Geode LX800 processors. An innovative CPU design provides the same processing performance even at a chip speed of 533 MHz as is normally achieved at 800 MHz with traditional processors. Thanks to this efficient CPU design, power loss is kept to a minimum, so the processor can be run without a fan. The Windows® CE operating system is stored on a compact flash card (CFC) – disk storage is not required. Fan-free CPU operation and flash memory guarantee 100% silent running. This is why the Web Panels are especially suited for use in applications demanding increased processor performance, but also valuing silent operation and a low price level. Typical applications are in home/building automation, and in industrial applications running under tough conditions.

General Details

Display / handling

- XGA resolution
- TFT technology
- Mounting positions: portrait or landscape

Communication

- 2x Ethernet
- Serial RS-232
- 2x USB 2.0
- PS / 2

Processor / server / OS

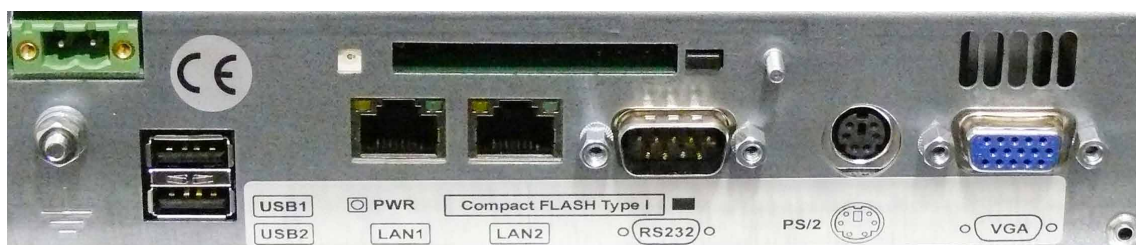
- AMD Geode LX800 processor
- 256 MB DRAM
- Web server
- FTP-Server
- File server
- Windows® CE 6.0
- CFC 128 MB

Software tool

- Saia PG5® Web-Editor

Browsers

- SBC Micro Browser
- Applet viewer
- Internet Explorer



Specifications



	PCD7.D5100TL010	PCD7.D5120TL010
Display (inches)	10.4"	12.1"
Technology / colors	TFT / 16.7 million	TFT / 16.7 million
Resolution / pixels	SVGA 800 × 600	SVGA 800 × 600
Input	Resistive touchscreen	Resistive touchscreen
CPU		
Processor	AMD Geode LX 800 (533 MHz)	AMD Geode LX 800 (533 MHz)
RAM	256 MB	256 MB
Compact flash card socket	1× internal with 128 MB CFC 1× external	1× internal with 128 MB CFC 1× external
Interfaces		
Ethernet	2× 10/100 Base, RJ-45	2× 10/100 Base, RJ-45
USB	2× USB 2.0	2× USB 2.0
Serial	1× RS-232	1× RS-232
Keyboard / mouse	Mini DIN PS/2	Mini DIN PS/2
VGA	1× external	1× external
General		
Power supply	24 VDC, ±20 %	24 VDC, ±20 %
Protection level front / back	IP 65 / IP 20	IP 65 / IP 20
Dimensions		
Dimensions	318 × 244 × 81 mm	464 × 296 × 74 mm
Front cut-out	303 × 229 mm	344 × 276 mm
Operating system / browsers / servers		
Operating system	Windows® CE 6.0	Windows® CE 6.0
Browsers	Internet Explorer Microbrowser Appletviewer	Internet Explorer Microbrowser Appletviewer
Virtual Java Engine	yes	yes
.Net	.Net Compact Framework	.Net Compact Framework
Saia.Net	Web-Connect Web-HMI Server	Web-Connect Web-HMI Server
Server	Web server FTP server File server (share) VNC (remote maintenance)	Web server FTP server File server (share) VNC (remote maintenance)

Saia-Burgess Controls AG

Bahnhofstrasse 18 | 3280 Murten, Schweiz
T +41 26 672 72 72 | F +41 26 672 74 99
www.saia-pcd.com

support@saia-pcd.com | www.sbc-support.com