

5.7" Saia PCD® Energy Manager

The Energy Manager panel has a 5.7" TFT display that can be run in VGA and ¼ VGA mode. For communications, Ethernet, USB and 2x RS485 interfaces are on board as standard. The device also has a real-time clock, an SD card slot and a battery.

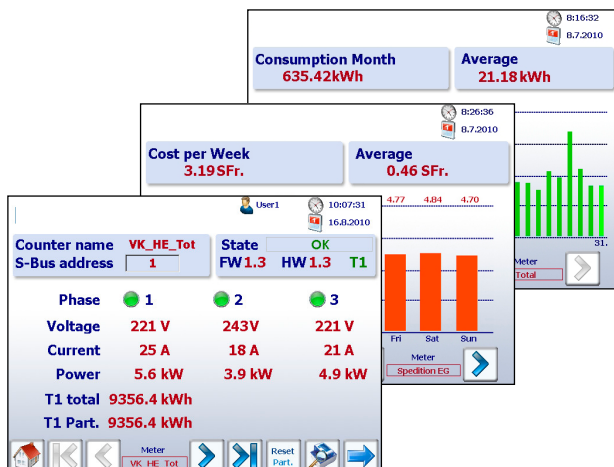
Without programming knowledge or software engineering, the Energy Manager can be used immediately. Any energy meters connected are automatically logged in under the setup menu. Energy logging, the visualization application and the data storage application are immediately operational. History data, current data (CSV/Excel files) and web visualization can be accessed from anywhere with the integral AutomationServer using FTP and HTTP. The Energy Manager panel is able to connect up to 128 mono-phase and three-phase, bus-coupled electric energy meters.

Main features

- ▶ 5.7" color TFT display / VGA resolution
- ▶ Logging of energy meter data to CSV
- ▶ STEP7® programmable
- ▶ 1 GB SD-Flash card
- ▶ Onboard digital inputs/outputs
- ▶ Integrated real-time clock & battery
- ▶ USB / Ethernet / RS485
- ▶ Automation Server
- ▶ Supports up to 128 bus-coupled energy meters ALD1, ALE3 or AWD3 with integrated Serial S-Net interface

Preconfigured web pages

- ▶ Actual and historical energy values and costs per Day, Week, Month and Year
- ▶ Counter and panel settings
- ▶ Counter values




Technical data

General data

Supply voltage	18...32 VDC
Current consumption	max 500 mA bei 24 VDC
Protection class (front)	IP 65
Dimensions (W × H × D) mm	202 × 156 × 50
Cut-out (W × H) mm	189 × 142
Temperature range	Operations: 0...50 °C typical Storage: -20...+70 °C
Humidity	Operations: 10 bis 80% Storage: 10 bis 98% kondensierend
Date-time (RTC)	Backup through battery for data retention
Battery	Lithium Renata CR 2032 (Retention 1...3 year)
Processor	Coldfire
Memory for local web server	4 MB Flash
SD card	1 GB
Number of energy meters	Up to 128 with integrated Serial S-Net interface

Display

Screen: colors	65 536
Display	5.7" TFT
Resolution / Pixel	VGA 640 × 480
Touch screen	yes
Contrast adjustment	yes
Backlight	LED

Interfaces

Ethernet 10 / 100 M	1 × RJ-45
USB 12 M	1 × Client
Serial 1	1 × RS-485 MPI
Serial 2	1 × RS-485 S-Bus
Operating System	SBC NT
Browser	SBC Micro-Browser
Server	Web-Server (HTTP D) / FTP-Server

Softwarewerkzeuge

Grafik-Editor	SBC Web-Editor
SPS-Software	STEP7 of Siemens (up to 4096 Flags, 2048 FCs, 2048 FBs, 512 DBs)

3 inputs for detection of 24 VDC signal

Input current	4 mA
Input filter delay	8 ms

3 inputs for detection of pulse signal

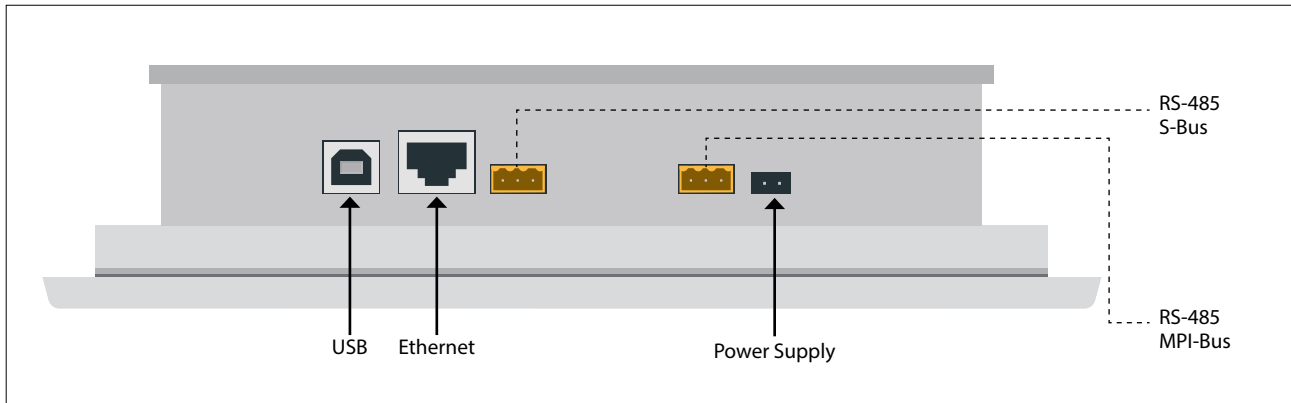
Related to pulse meter norm	CEI62053-031
-----------------------------	--------------

3 relay outputs for switching 24 V / 1A

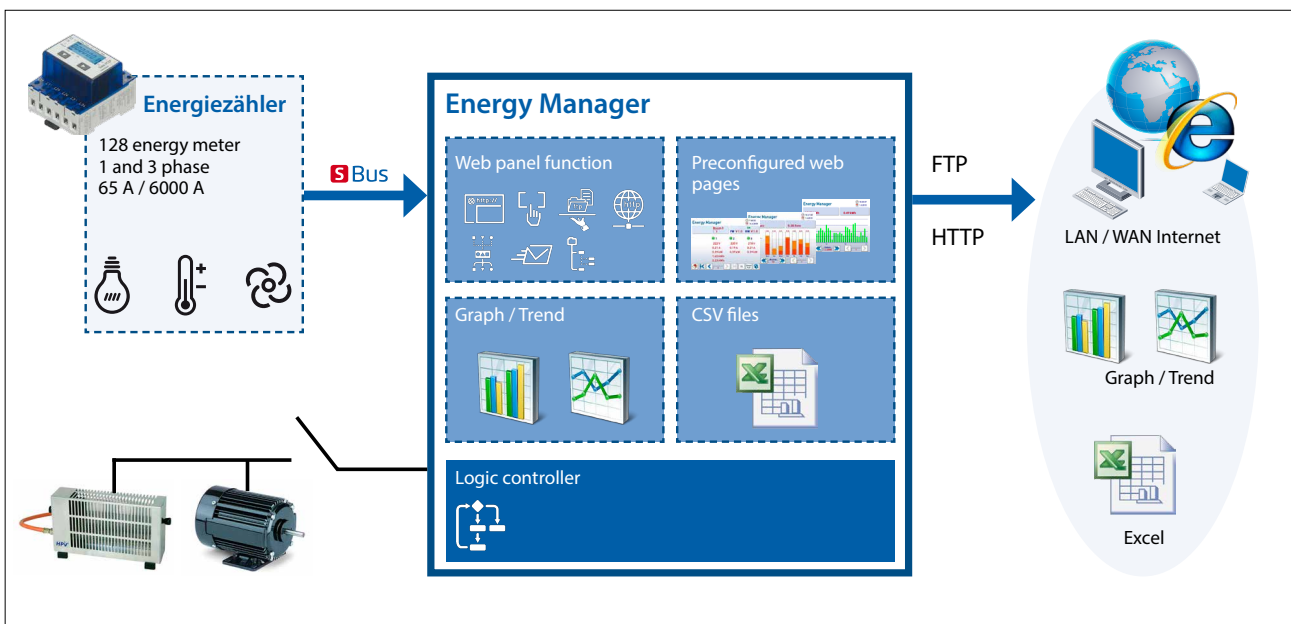
Rupturing capacity ≤ 12 VDC	typical 200 mW below 12 VDC
Contact protection	39 V bidirectional
Filtering	RC filter for ripple attenuation

*STEP is a registered trademark of Siemens Ltd.

Connections



Energy meter



- ▶ All energy manager and energy meter settings are done in panel setup
- ▶ Easy extending or replacing of integrated visualization with S-Web Editor
 - ▶ Flexible adjustable to customers application
- ▶ Pre-configured web visualization
 - ▶ No need for programming
 - ▶ Works out of the box



Ordering Information

Typ	Description	Weight
PCD7.D457ET7F	Energy Manager base line with S7 LC	1100 g

Saia-Burgess Controls AG

Bahnhofstrasse 18 | 3280 Murten, Switzerland
 T +41 26 580 30 00 | F +41 26 580 34 99
 www.saia-pcd.com

support@saia-pcd.com | www.sbc-support.com