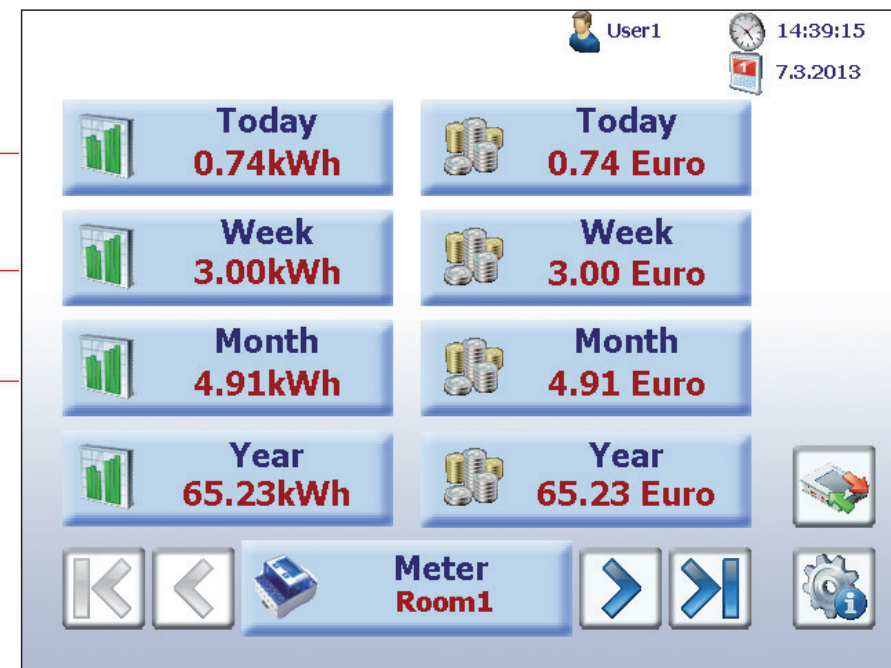
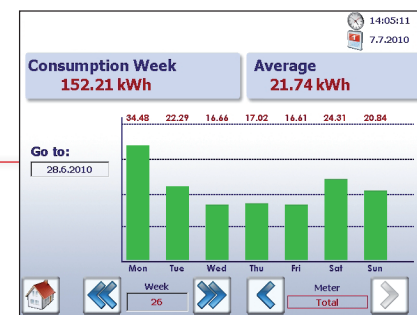


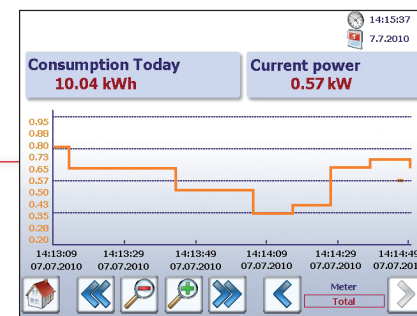
Knowing what is running – at the touch of a button



All the consumption details at a glance



Consumption and costs per week/month/year, individually per meter



Current consumption

- System
- Settings
- Energy Meter
- Log Data
- Logic Controller

Settings for options

Language

- Germany
- UK
- France
- Italy
- Hungary

Language selection


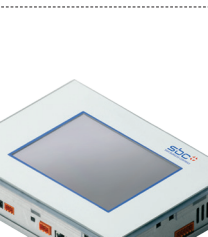

Counter name	ICT	State	OK
S-Bus address	4	FW 1.3	HW 1.2 T1
Phase	1	2	3
Voltage	222 V	221 V	221 V
Current	1.7 A	0.1 A	1.5 A
Power	0.18 kW	0.00 kW	0.18 kW
T1 total	362.81 kWh		
T1 Part	362.81 kWh		

Meter status

Input	State	Meter
Digital 1	1	
Digital 2	0	
Digital 3	1	
Digital 4	1	23
Digital 5	0	7684
Digital 6	0	3

Status inputs/outputs

Our proposal/ordering information

Description	Order number	Weight
 Energy meter PN 32A, LCD with S-Bus ▶ Single-phase energy meter, 230 VAC, 50 Hz ▶ LCD display ▶ S-Bus communication ▶ MID certification	ALD1D5FS00A2A00	80 g
 Energy meter 3P+N 65A 2T LCD with S-Bus ▶ 3-phase energy meter, 3 × 230/400 VAC, 50 Hz ▶ LCD display ▶ 2 tariffs ▶ S-Bus communication ▶ MID certification	ALE3D5FS10C2A00	190 g
 Energy meter 3P+N, 5A, converter, LCD, S-Bus ▶ 3-phase energy meter, 3 × 230/400 VAC, 50 Hz ▶ LCD display ▶ 1 tariff ▶ Converter measurement up to 1500 A (1500:5) ▶ S-Bus communication ▶ MID certification	AWD3D5WS00C2A00	190 g
 Energy meter 3P+N, 5A, converter, LCD, S-Bus ▶ 3-phase energy meter, 3 × 230/400 VAC, 50 Hz ▶ LCD display ▶ 1 tariff ▶ Converter measurement up to 1500 A (1500:5) ▶ S-Bus communication ▶ MID certification	AWD3D5WS00C3A00	190 g
 Energy Manager Web Panel ▶ 5.7" colour TFT display/VGA resolution ▶ Integrated user interface with preconfigured web pages ▶ Recording of energy data ▶ 1 GB memory card for the recording of data ▶ Supports up to 128 bus-coupled energy meters ▶ Also programmable with STEP7 from Siemens ▶ Integrated inputs/outputs ▶ USB / Ethernet / RS485 ▶ Current requirements: 600 mA at 24 VDC	PCD7.D457ET7F	1100 g
 Power supply SMPS 24 VDC 2.5 A ▶ Input: 115...230 VAC ▶ Output: 24 VDC, 2.5 A	Q.PS-AD2-2402F	450 g

Ready to use out of the box



Saia-Burgess Controls AG
 Bahnhofstrasse 18 | 3280 Murten, Switzerland
 T +41 26 672 72 72 | F +41 26 672 74 99
 www.saia-pcd.com

support@saia-pcd.com | www.sbc-support.com

P+P26/522 EN05 11.2013 Subjects to change without notice.

Energy costs under control

out-of-the-box energy management solution



Bus-enabled electric meters and operator panel with ready-to-use logging and analysis function

- ▶ Easily installed by electricians
- ▶ Can be integrated to corporate IT networks
- ▶ Complete solution that fits your budget



S-Energy – Your easy start in energy management

With S-Energy, electric metering and monitoring of energy consumption becomes very easy. As well as being designed to be simple to install and operated S-Energy is also highly flexible and easily expanded. Simply Install the meters at the machine or appliance in the usual way and connect the meters to the Energy Manager with a simple two wire data cable:
The installation is up and running and energy data immediately appears on the operator panel in graphical format. The Energy Manager also easily connects to corporate networks via Ethernet – in this way remote energy analysis and operation can be carried out from your office PC using any web browser. S-Energy is scalable and can also be customized according to management requirements. S-Energy is therefore your tool to develop energy monitoring and control tailored to company needs.

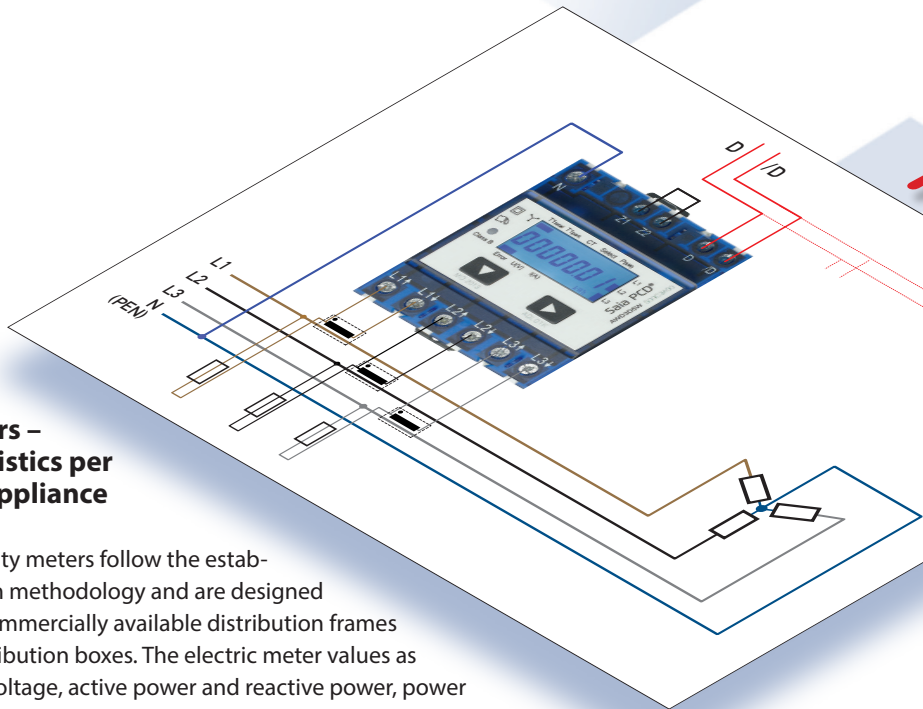
- ▶ **Out of the box and it's up and running**
 - ▶ Bespoke software installations or complex configurations are not necessary
- ▶ **S-Energy expands without limits in line with capacity and functional planning**
 - ▶ Simply add meters where they are required
 - ▶ Integrate S-Energy into the corporate network for remote access and additional data analysis
 - ▶ Includes the network communication interfaces to the automation and control level
- ▶ **Capture energy consumption data with minimum up front investment**
 - ▶ Developing energy management in small calculable steps
 - ▶ Short decision making process

Bus-enabled electric meters – targeted statistics per machine or appliance

S-Energy electricity meters follow the established installation methodology and are designed for DIN rails of commercially available distribution frames or domestic distribution boxes. The electric meter values as well as current, voltage, active power and reactive power, power factor $\cos\phi$ are all automatically recorded. The meter communication bus system works up to distance of 1 km, the values are transmitted to Energy Manager which logs, analyses and presents the data in graphical format.
▶ Wide range of single and 3-phase energy meters up to a maximum of 1500 A
▶ Measuring Instruments Directive (MID) – approved for metering and billing purposes

Remote access – meter reading via the internet using your PC

Energy Managers can be connected to any home or corporate network. Meter readings and operation can be carried out using any computer with a standard browser such as IE, Firefox and Opera. There is no need for any special software to be installed on your PCs. Using S-Energy you have full control of your installations by using remote access – saving the electrician the periodic individual site visits.



Energy Manager – graphical display of consumption values on site

The Energy Manager displays the consumption reports using a high-quality colour TFT operator panel. Energy values such as electrical power and work (kWh) as well as costs can be presented as meaningful diagrams via an intuitive touch based user interface. In addition, the Energy Manager records captured values in an Excel-readable CSV file which can be easily transferred to a defined PC via FTP. The Energy Manager is ready for use out of the box without any additional configuration needed. Electricity meters are automatically detected and displayed in the user interface.

- ▶ High-quality 5.7" colour TFT display (VGA/640 × 480 pixels) with touch-screen
- ▶ **Out of the box data capture and storage**
 - ▶ Up to date energy values
 - ▶ Historical data recording (day/week/month/year)
 - ▶ Costs (day/week/month/year)
- ▶ Recording in Excel-readable files on integrated 1 GB SD memory card
- ▶ Up to 128 electric meters can be connected to a single operator panel with automatic meter detection

IT
Provide data in a suitable format for IT

Energymanagement – expandable at all levels

Automation
Seamless integration into automation



Call up consumption values from any location

- ▶ Locally on site: Web Panel
- ▶ Company/office: LAN/WLAN
- ▶ Globally: Internet, telecommunication
- ▶ Mobile: PDA, iPad, mobile phone



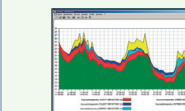
Analyse consumption values using Excel

- ▶ Recording of data in Excel-readable files in CSV format
- ▶ Creation of reports and printing in Excel



Store consumption values in database

- ▶ Integration of energy data in database (eg MySQL)



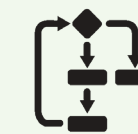
Integrate consumption values into management level

- ▶ Long-term data recording
- ▶ Visualisation



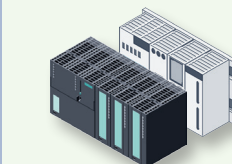
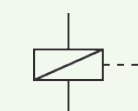
Individually configure operation and display

- ▶ Adapt or expand the visualisation included in the scope of delivery
- ▶ Easy editing and creation with SBC S-Web Editor software tool



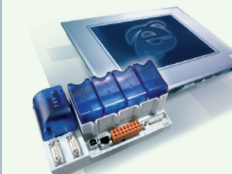
Controlling energy with integrated logic function

- ▶ Logic controller for consumption-dependent control functions
- ▶ Peak load switch-off, alarms via e-mail and SMS, etc.
- ▶ Programmable
- ▶ Integrated inputs/outputs



Provide consumption values for SPS

- ▶ SIMATIC-S7 via MPI
- ▶ Modbus



Full integration into Saia PCD® automation system

Install

Analyse

Optimise