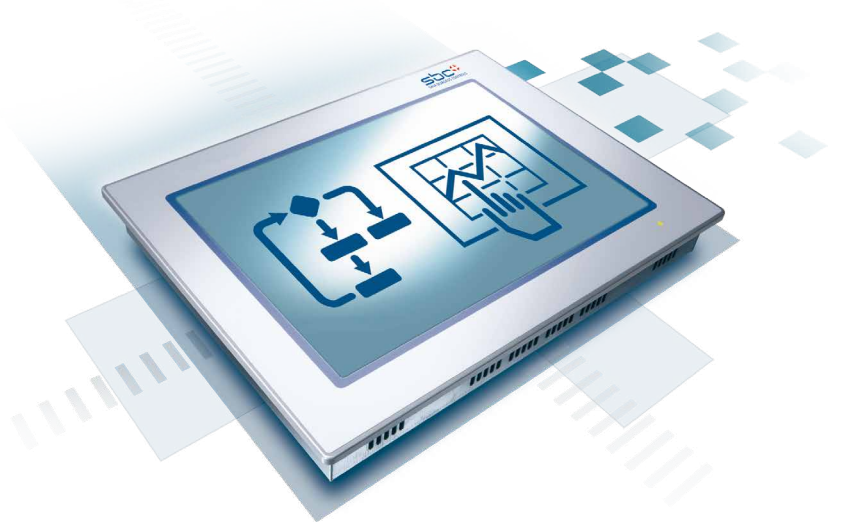


# 12.1" TFT/SVGA Programmable Web-Panel MB Saia PCD7.D412DT5F

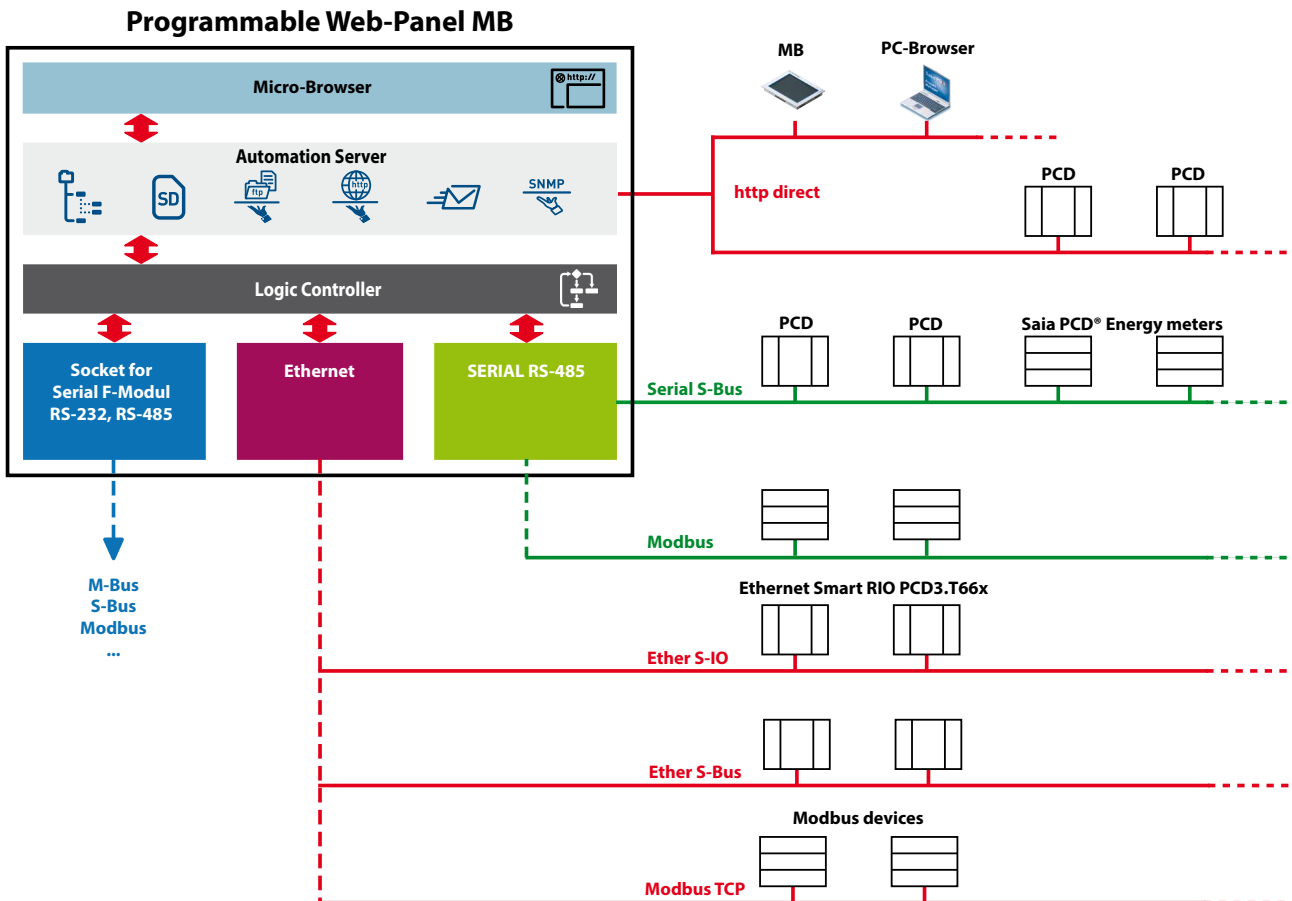


The new product type combines a Web-Panel and an Automation Server as well as control and management functions in one device. The integrated logic controller can be programmed with the software tool Saia PG5® to perform simple control applications or complex HMI functions.

With the integrated Automation Server, the large storage resources and multiple communication possibilities, this panel fits perfect as a management station and data concentrator.

The 12" programmable Web Panel MB has a high-quality TFT color display with a SVGA resolution (800 × 600 pixels), LED backlight, and a laminated touchscreen with five-wire technology.

## Block diagram (functionality)



## Technical data

### General data

Supply voltage	18...32 VDC
Current consumption	max 600 mA on 24 VDC
Protection class (front)	IP 65
Dimensions (W × H × D) mm	319 × 264 × 60
Cut-out (W × H) mm	300 × 244
Temperature range	Operations: 0...50 °C typical Storage: -25...+70 °C
Relative humidity	Operations: 10 to 80% Storage: 10 to 98% non condensing
Processor	Coldfire CF5373L, 240 MHz
Date-time (RTC)	Backup through battery for data retention
Battery	Lithium Renata CR2032 (Retention 1...3 year)
Status front LED	Multicolor

### Display

Screen colors	65'536
Display	12.1" TFT
Resolution / Pixel	SVGA 800 × 600
Resolution / Pixel	Five-wire resistive touch screen
Contrast adjustment	Yes
Backlight	LED with a life cycle of 50 thousand hours

### Logic Controller

User program, ROM /DB/text	1 MBytes
RAM DB/text	1 MBytes
Media	16'384 Flags / 16'384 Registers
Backup for user program	User program is always saved on integral µSD-Card and is therefore always backed up, even without battery!
User file system	128 MBytes on board
Program cycle time	10 cycles / sec maximum

### Fieldbus Protocols

Serial-S-Bus, Ether-S-Bus, Ether-S-IO
Modbus RTU, Modbus ASCII or TCP, M-Bus

### Internet Services

Browser	SBC Micro-Browser
HTTP Server	Visualisation with Web-Browser and Web-Panel
FTP-Server	Simple data exchange
TCP/IP	Efficient communication
SMTP Client	E-Mails with file attachments (e.g. Log-files)
DHCP and DNSClient	Easy connection to IP networks
SNTP Client	Synchronisation of internal clock

### Synchronisation of internal clock

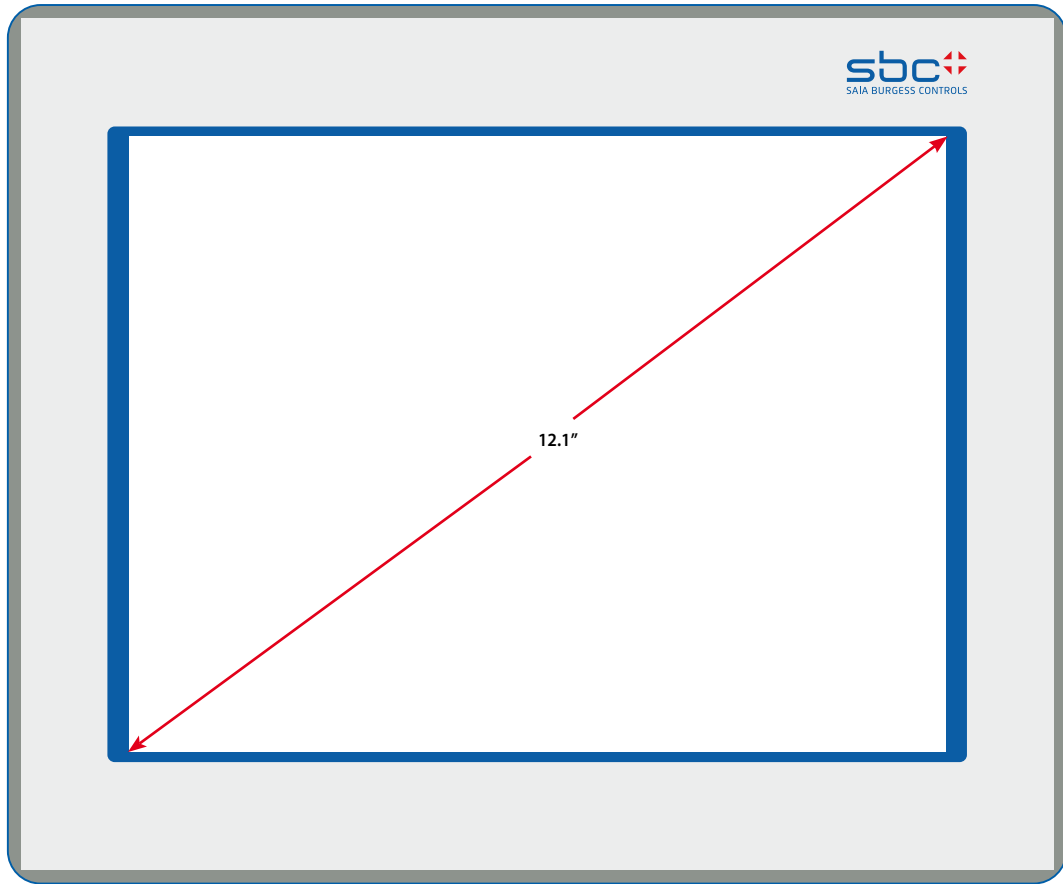
Ethernet 10 / 100 M	2 × RJ45 (Switch)/http direct
USB 12 M	1 × client
Serial up to 115 kB	RS-485 & socket for PCD7.F1xxS

### Software

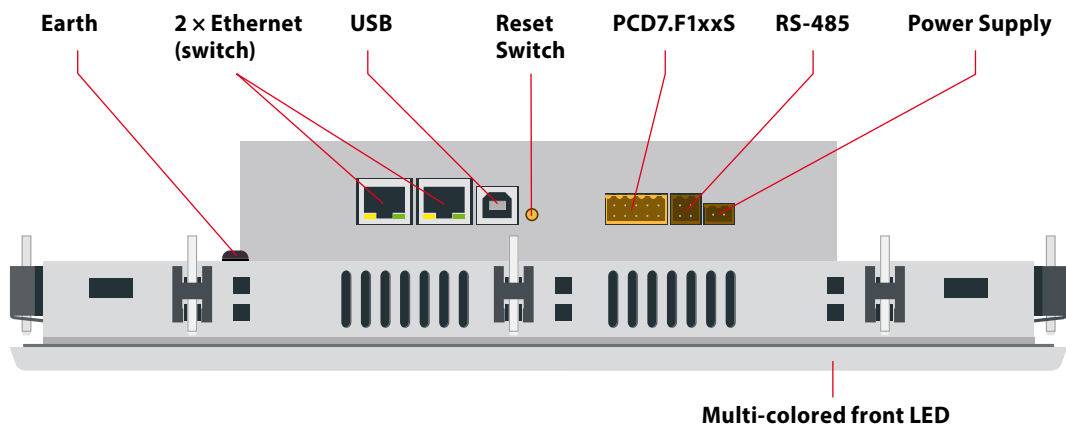
Saia PG5®	Programming tool for PLC applications (IL, FUPLA and GRAFTEC)
Saia PG5® Web-Editor	Graphics editor for SBC Micro-Browser



## Front view

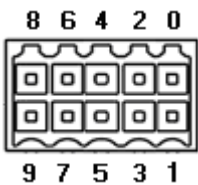


## Installation



## Connections

### PCD7.F1xxS



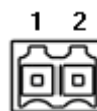
Connector pins	Signal RS-232	Signal RS-485
0	GND	GND
1	TXD	D
2	RXD	/D
3	RTS	
4	CTS	
5	GND	GND
6	DTR	
7	DSR	
8	COM	
9	DCD	

### RS-485



Connector pins	Signal
1	GND
2	NC
3	/D
4	D

### Power Supply



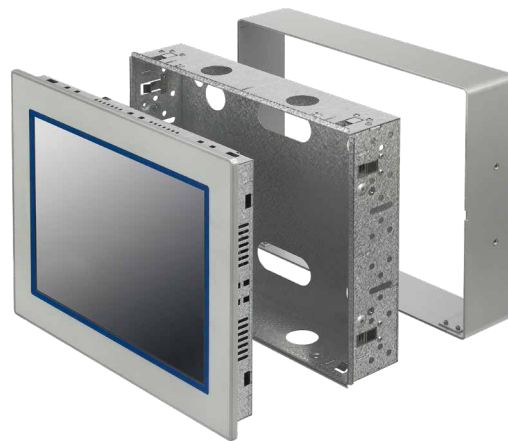
Connector pins	Signal
1	24 V (+)
2	GND (-)

## Order information

Model	Description	Weight
<b>Programmable Web-Panel with embedded SBC Micro-Browser</b>		
<b>PCD7.D412DT5F</b>	Programmable Web panel with embedded Micro-Browser, Base line 12.1" TFT SVGA, 800 × 600 pixels, 65'536 colours with touch screen, transmissive LED backlight, programmable with Saia PG5® tool (USB), 128 MByte on-board file system, web and FTP server, 2× Ethernet TCP/IP (switch), RS-485 and socket for PCD7.F1xxS, for front panel flush mounting	2.700 g
<b>PCD7.D412DT5Z11</b>	Programmable Web panel PCD7.D412DT5F with embedded Micro-Browser, with neutral laminated front overlay (without SBC logo and code)	2.700 g
<b>SKU Accessories</b>		
<b>PCD7.D412-IWS</b>	Kit for in-wall-mounting	1.200 g
<b>PCD7.D412-OWS</b>	Kit for on-wall-mounting	1.600 g
<b>3 230 9178-001</b>	Fixation set (4 pieces) for Web panel with embedded Micro-Browser for D412DTxF (use 2 set)	24 g
<b>3 230 9178-002</b>	Fixation set (6 pieces) for Web panel with embedded Micro-Browser	36 g



**Kit for in-wall-mounting**  
**PCD7.D412-IWS**



**Kit for on-wall-mounting**  
**PCD7.D412-OWS**