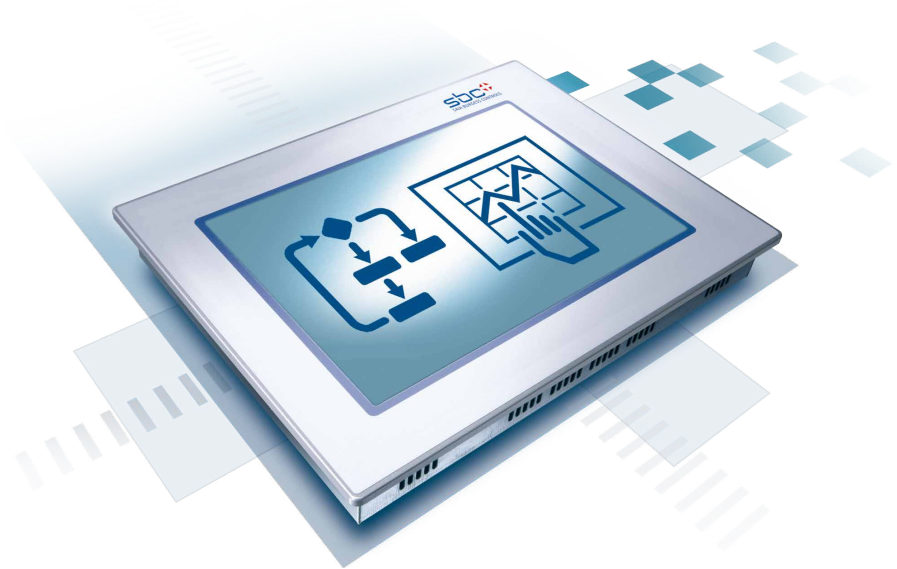


10.4" TFT/VGA Programmable Web-Panel MB Saia PCD7.D410VT5F

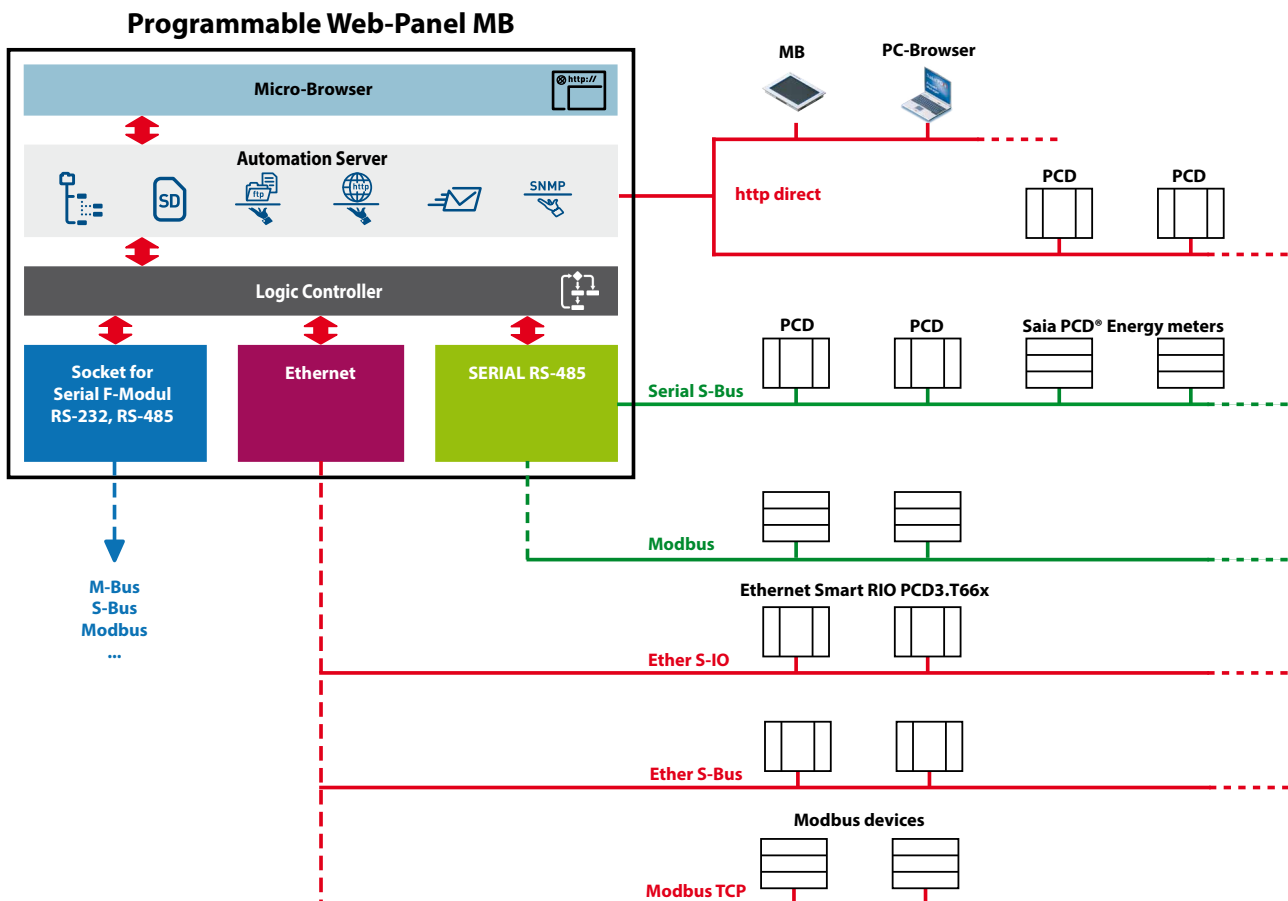


The new product type combines a Web-Panel and an Automation Server as well as control and management functions in one device. The integrated logic controller can be programmed with the software tool Saia PG5® to perform simple control applications or complex HMI functions.

With the integrated Automation Server, the large storage resources and multiple communication possibilities, this panel fits perfect as a management station and data concentrator.

The 10" programmable Web-Panel MB has a high-quality TFT color display with VGA resolution (640 × 480 pixels).

Block diagram (functionality)



Technical data

General data

Supply voltage	18...32 VDC
Current consumption	max 600 mA on 24 VDC
Protection class (front)	IP 65
Dimensions (W x H x D) mm	281 x 221 x 56
Cut-out (W x H) mm	262 x 202
Temperature range	Operations: 0...50 °C typical Storage: -25...+70 °C
Relative humidity	Operations: 10 to 80 % Storage: 10 to 98 % non condensing
Processor	Coldfire CF5373L, 240 MHz
Date-time (RTC)	Backup through battery for data retention
Battery	Lithium Renata CR2032 (Retention 1...3 year)

Display

Screen colors	65'536
Display	10.4" TFT
Resolution / Pixel	VGA 640 x 480
Resolution / Pixel	Four wire resistive touch screen
Contrast adjustment	Yes
Backlight	LED with a life cycle of 50 thousand hours

Logic Controller

User program, ROM /DB/text	1 MBytes
RAM DB/text	1 MBytes
Media	16'384 Flags / 16'384 Registers
Backup for user program	User program is always saved on integral µSD-Card and is therefore always backed up, even without battery!
User file system	128 MBytes on board
Program cycle time	10 cycles / sec maximum

Fieldbus Protocols

	Serial-S-Bus, Ether-S-Bus, Ether-S-IO
	Modbus RTU, Modbus ASCII or TCP, M-Bus

Internet Services

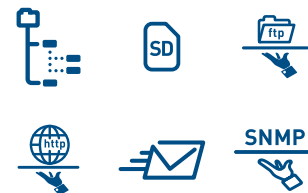
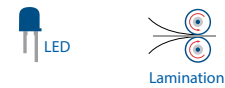
Browser	SBC Micro-Browser
HTTP Server	Visualisation with Web-Browser and Web-Panel
FTP-Server	Simple data exchange
TCP/IP	Efficient communication
SMTP Client	E-Mails with file attachments (e.g. Log-files)
DHCP and DNSClient	Easy connection to IP networks
SNTP Client	Synchronisation of internal clock

Synchronisation of internal clock

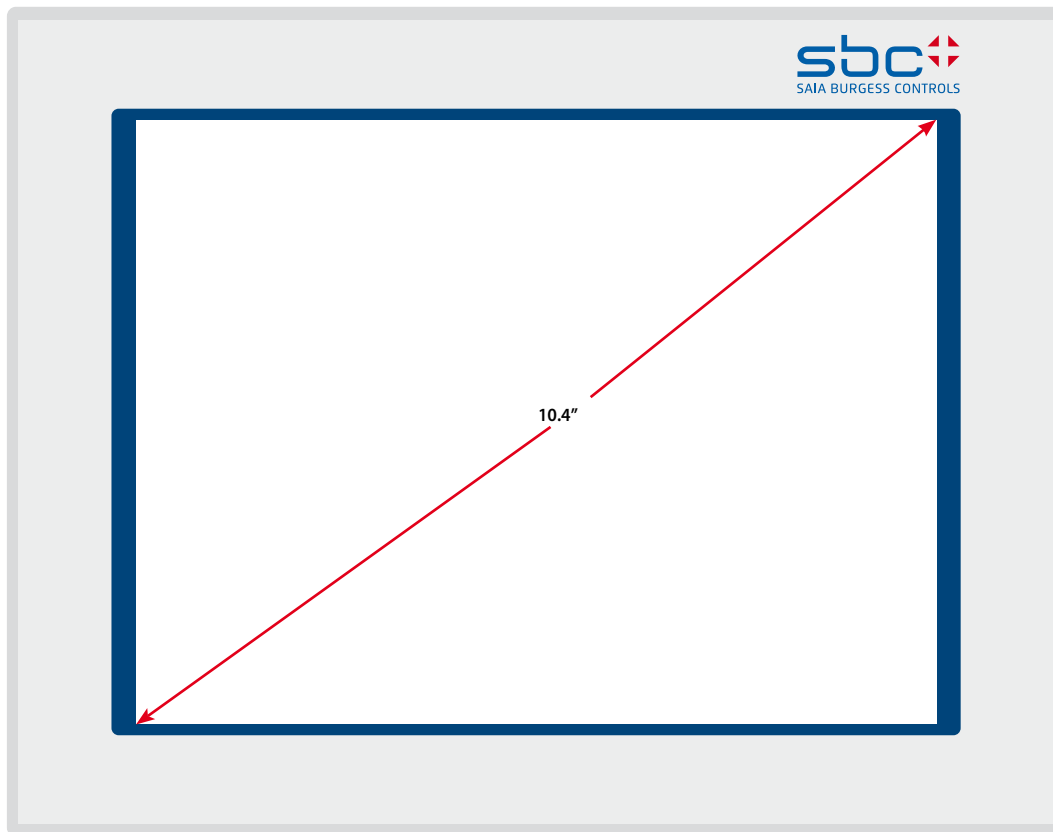
Ethernet 10 / 100 M	2 x RJ45 (Switch)/http direct
USB 12 M	1 x client
Serial up to 115 kB	RS-485 & socket for PCD7.F1xx5

Software

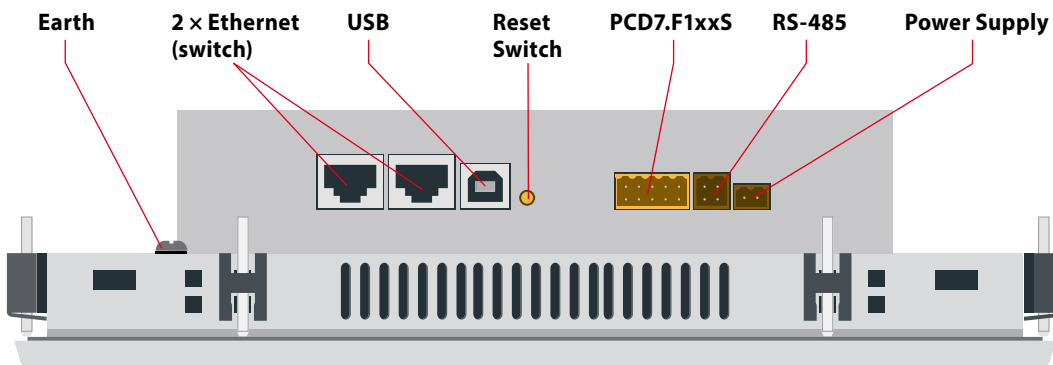
Saia PG5®	Programming tool for PLC applications (IL, FULPA and GRAFTEC)
Saia PG5® Web Editor	Graphics editor for SBC Micro Browserer



Front view

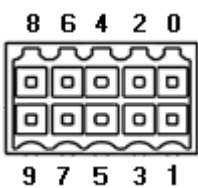


Installation



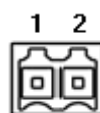
Connections

PCD7.F1xxS



Connector pins	Signal RS-232	Signal RS-485
0	GND	GND
1	TXD	D
2	RXD	/D
3	RTS	
4	CTS	
5	GND	GND
6	DTR	
7	DSR	
8	COM	
9	DCD	

Power Supply



Connector pins	Signal
1	24 V (+)
2	GND (-)

RS-485



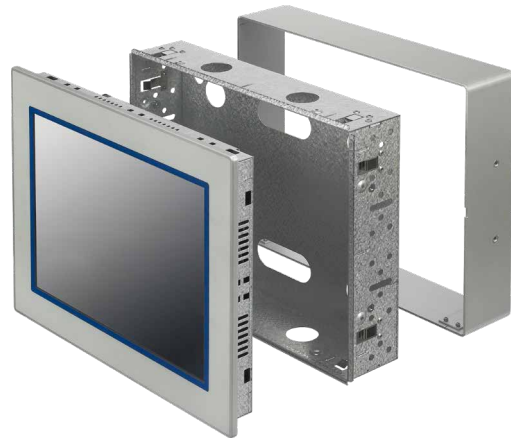
Connector pins	Signal
1	GND
2	NC
3	/D
4	D

Order information

Model	Description	Weight
Programmable Web-Panel with embedded SBC Micro Browser		
PCD7.D410VT5F	Programmable Web panel with embedded Micro-Browser, Base line 10.4" TFT VGA, 640 × 480 pixels, 65'536 colours with touch screen, transmissive LED backlight, programmable with Saia PG5® tool (USB), 128 MByte on-board file system, web and FTP server, 2 × Ethernet TCP/IP (switch), RS-485 and socket for PCD7.F1xxS, for front panel flush mounting	2.100 g
PCD7.D410VT5Z11	Programmable Web panel PCD7.D410VT5F with embedded Micro-Browser, with neutral laminated front overlay (without SBC logo and code)	2.100 g
SKU Accessories		
PCD7.D410-IWS	Kit for in-wall-mounting	850 g
PCD7.D410-OWS	Kit for on-wall-mounting	1.300 g
3 230 9178-001	Fixation set (4 pieces)	24 g
3 230 9178-002	Fixation set (6 pieces)	36 g



Kit for in-wall-mounting
PCD7.D410-IWS



Kit for on-wall-mounting
PCD7.D410-OWS