

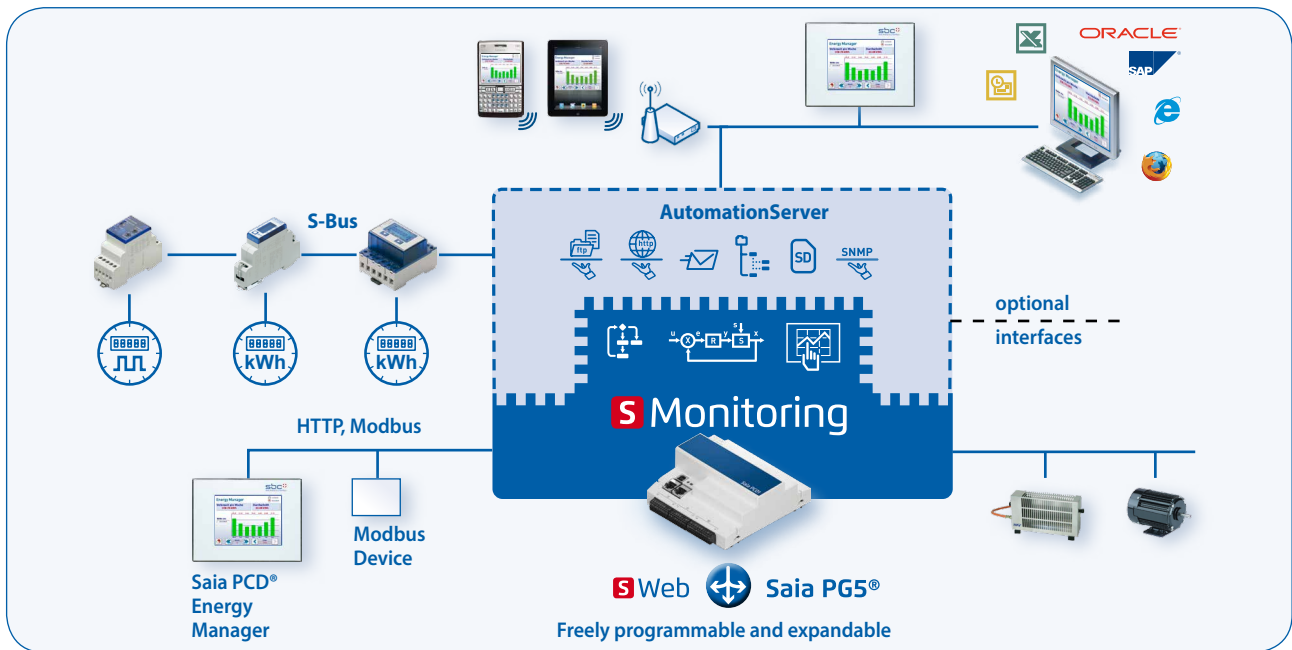
Saia PCD1.M0160E0 E-Controller

The E-Controller created for the electrical systems is an SBC Function PCD, which can be used immediately in the default setting, without additional programming.



Energy meters connected via S-Bus and PCD7.H104SE gateway modules for pulse counters are detected automatically. The E-Controller with energy monitoring function combines data capture, visualisation and logging of energy consumption in one compact device. The applications integrated in the PCD are created with the Saia PG5® software. These applications can be adjusted, extended or changed completely as required. With the optional communication interfaces, further protocols and thus data (e.g. from a Modbus counter or M-Bus) can be integrated. As a result of its electrical switch cabinet-compatible design, this controller is suitable for installation in the distribution board next to the energy meters. Other simple applications, for example in the sub-distributor as a communication gateway, can also be implemented using the E-Controller.

Function overview



Preconfigured user interface via web browser

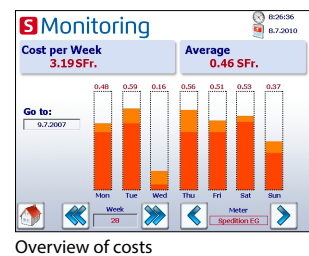
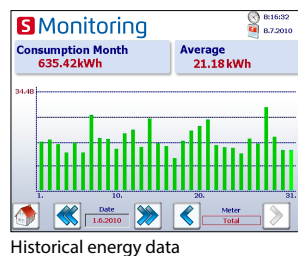
SBC MB app
Operation and monitoring on iPhone, iPad and Android

ANDROID

S Monitoring

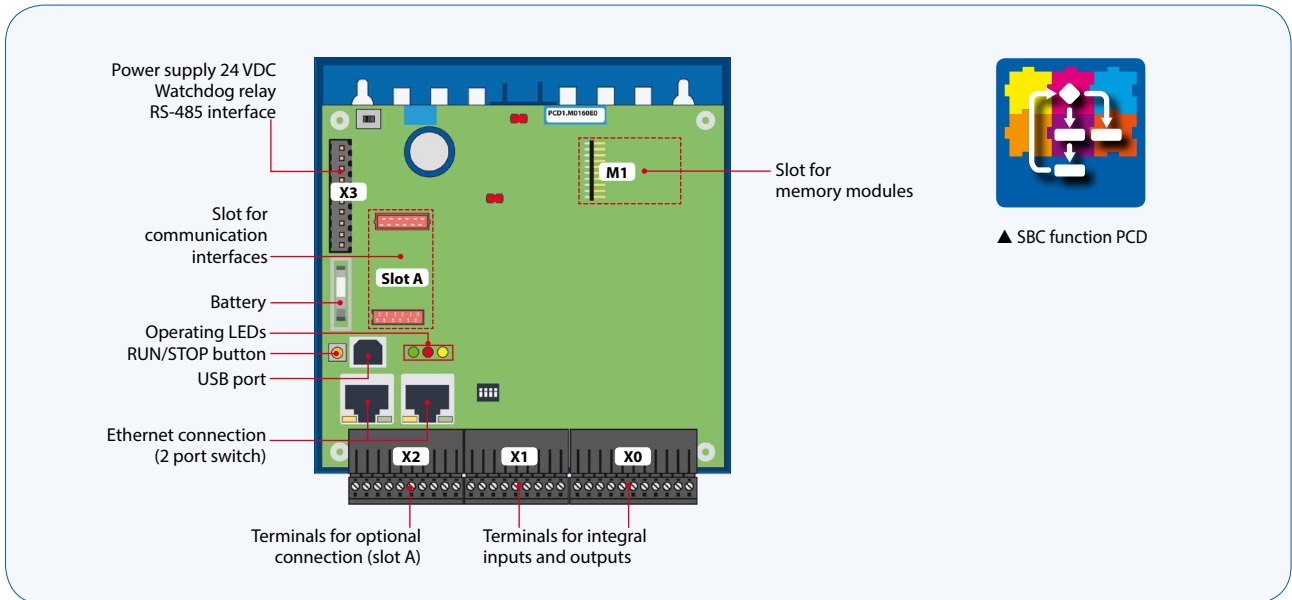
Counter name	VK_HE_Tot	State	OK
S-Bus address	1	FW 1.3	HW 1.3 T1
Phase	1	2	3
Voltage	221 V	243V	221 V
Current	25 A	18 A	21 A
Power	5.6 kW	3.9 kW	4.9 kW
T1 total	9356.4 kWh		
T1 Part.	9356.4 kWh		

Current meter readings



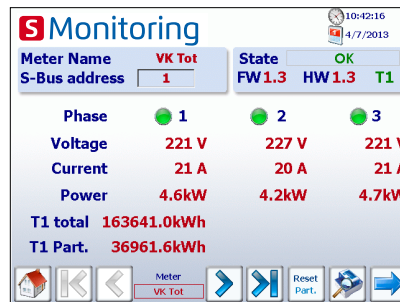
The user interfaces can be accessed with a Java-enabled standard browser or, from smartphones, with the SBC Micro Browser App for Apple and Android. The user interfaces can be individually tailored by the user to his needs using the PG5 programming tool.

Device installation

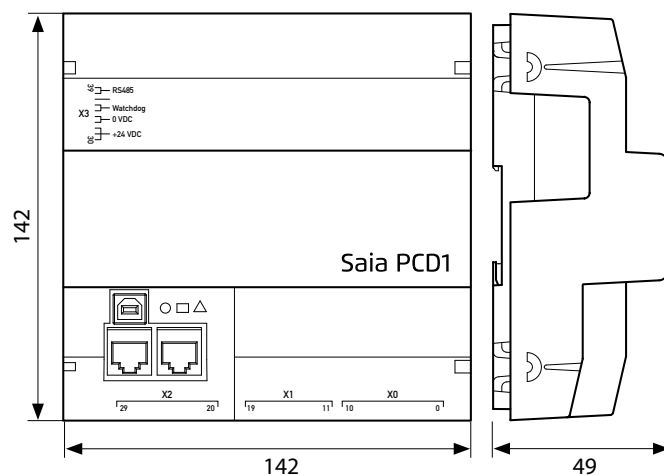


Integrated functions can be configured via web browser

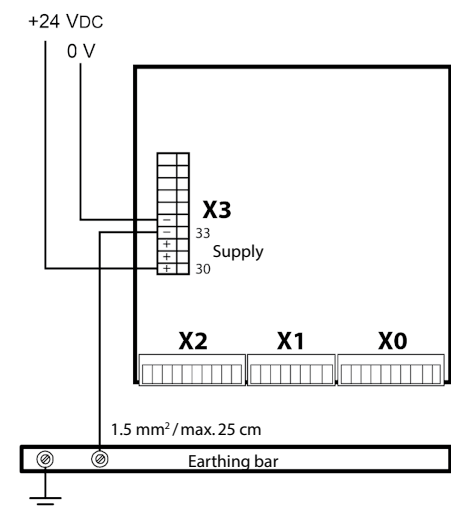
- ▶ Display and logging of energy consumption
- ▶ Automatic SBC S-Bus energy meter detection
- ▶ Display of digital inputs
- ▶ Manual operation of digital outputs
- ▶ Parameterizing outputs (min./max.)
- ▶ Sending of alarm and data e-mails
- ▶ Displaying the status of the E-Controller



Dimensions



Power supply & connection plan



Order details

Type: PCD1.M0160E0 Description: E-Controller for distribution board

Saia-Burgess Controls AG

Bahnhofstrasse 18 | 3280 Murten, Switzerland
T +41 26 672 72 72 | F +41 26 672 74 99
www.saia-pcd.com

pcdsupport@saia-pcd.com | www.sbc-support.com