



Description of the add-on FindSymbolsAndMacros

for Saia PCD® Supervisor

0	Contents	Page
0	Contents	1
1.	Document version	1
2.	Description	2
3.	Necessary conditions	2
4.	Settings in the .ini file:	3
5.	Call with command cell parameter (.bat).....	3
6.	Using the tool (without .bat).....	4
7.	Using the tool as an add-on for PG5.....	5
8.	Special features.....	6

1. Document version

Date	Version	From	Description
2020-04-09	ENG01	HaMa	Translation from the German version

2. Description

This small but efficient tool essentially does two things:

- 1) Searches FuPla-generated fbd files for symbol groups (static variables)
- 2) Searches the _global.sy5 file for symbol groups to be found under the Editor Tab System symbol

The result of the two searches is saved in a file (Device-Name.csv):

	A	B	C	D
1	PCD.Alarm.Liste.Allgemein	[_SWA_ALARM1_PCD_V30]		
2	PCD.Trend.HDLogDB	[_HDAINIT]		
3	PCD.Trend.HDLogDB.RamDisk	[_HDAINIT]		
4	BACnet.Device	[_DDC_BAC14DEV_V2]		
5	PCD.Alarm.Gruppen	[_DDC_INSYSTEM270]		
6	PCD.Intern.Überwachung	[_DDC_INLIBRARY270]		
7	PCD.Intern	[_BMOVE2]		
8	PCD.ABS.Betriebsart	[_DDC_INANTIBLCK270]		
9	PCD.Spannung.Überwachung	[_DDC_ALFUSE270]		
10	PCD.BMA.Meldung	[_DDC_AL1ALA270]		
11	PCD.AUL.Temp.Fühler	[_DDC_ANSENSOR270]		
12	PCD.Status	[_DDC_SYSTATE270]		
13	Kalender.Freigabe	[_DDC_SPBIN270]		
14	Kalender.Kanal1.Übergeordnet	[_DDC_SPBIN270]		

Figure 1: Example of exported symbol groups

This file is found under the device in the PG5 project path.

3. Necessary conditions

The required tool version is ≥ v1.8. It can be placed in any path. However, it would be best to save it directly in the PG5 project path to be parsed.

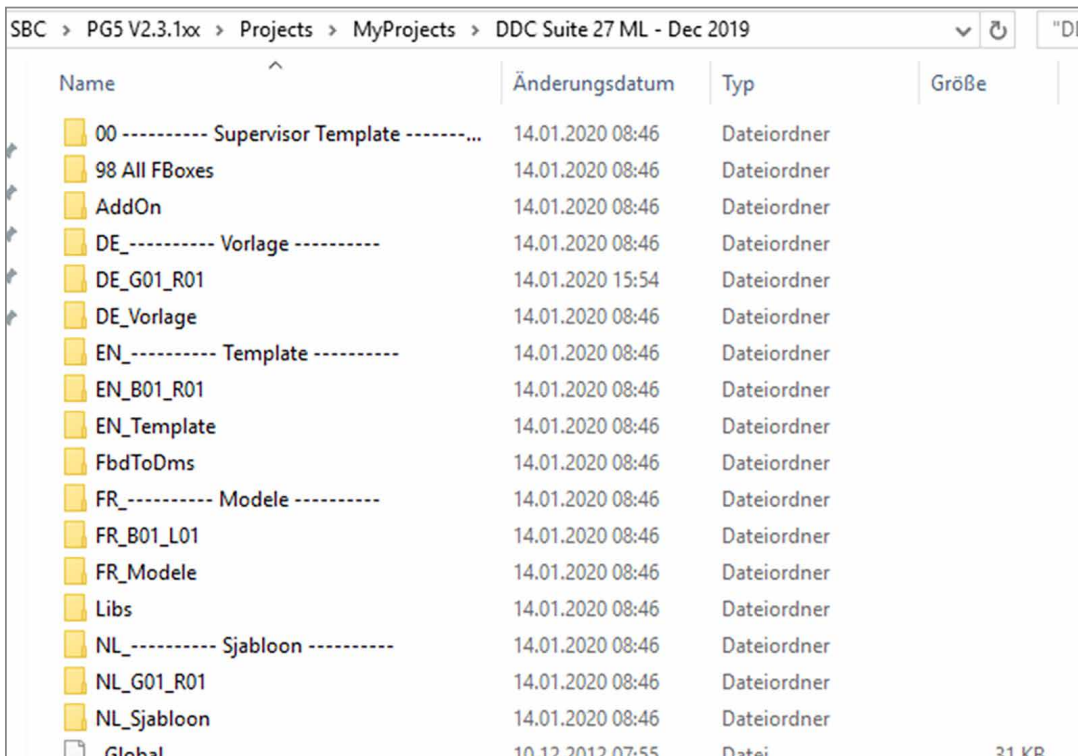
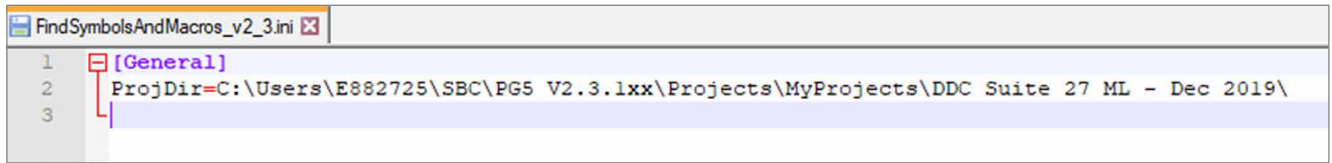


Figure 2: Saving the tool in a PG5 project

4. Settings in the .ini file:

From version 1.9 onward, an .ini file will also be created after the first successful run. By default this only contains one entry:



```

1  [General]
2  ProjDir=C:\Users\E882725\SBC\PG5 V2.3.1xx\Projects\MyProjects\DDC Suite 27 ML - Dec 2019\
3

```

Figure 3: Entries in the ini file after the initial call

It is possible to set an additional parameter "ParseMode" as a default in the tool:

```
ParseMode = [1,2,3]
```

Mode 1 = Search fbd file only

Mode 2 = Search _global.sy5 only

Mode 3 = Search fbd and _global.sy5 [default]

5. Call with command cell parameter (.bat)

From version 2.3 onward it is possible to call the tool with a batch file and command line parameters:

```

[FSAM.bat]
FindSymbolsAndMacros_v2_3.exe "C:\Users\E882725\SBC\PG5 V2.3.1xx\Projects\MyProjects\DDC
Suite 27 ML - Dec 2019\DE_G01_R01\HKLS.fbd"

```

The path in the quotation marks (") indicates the path from which to start.

6. Using the tool (without .bat)

Start the tool from the path where it was saved. The "Choose fbd file" dialog box will open

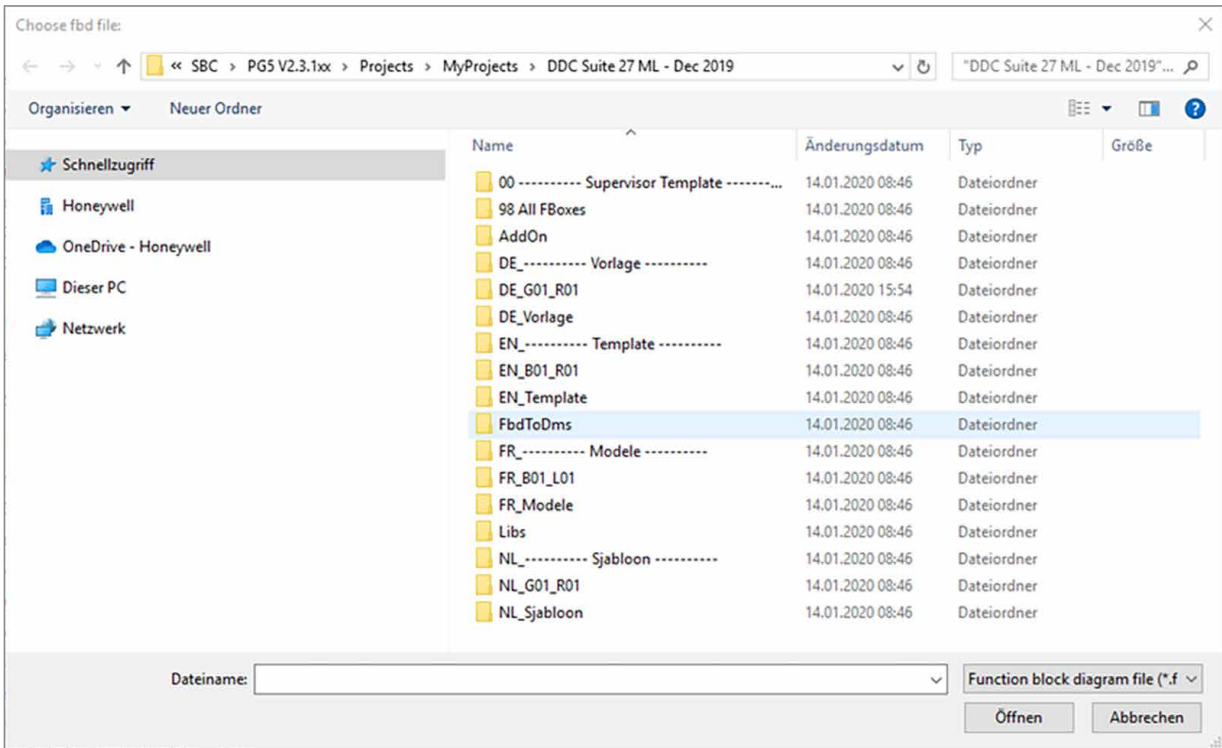


Figure 4: Choose fbd file starting dialog

Navigate to the first device and select an fbd file there:

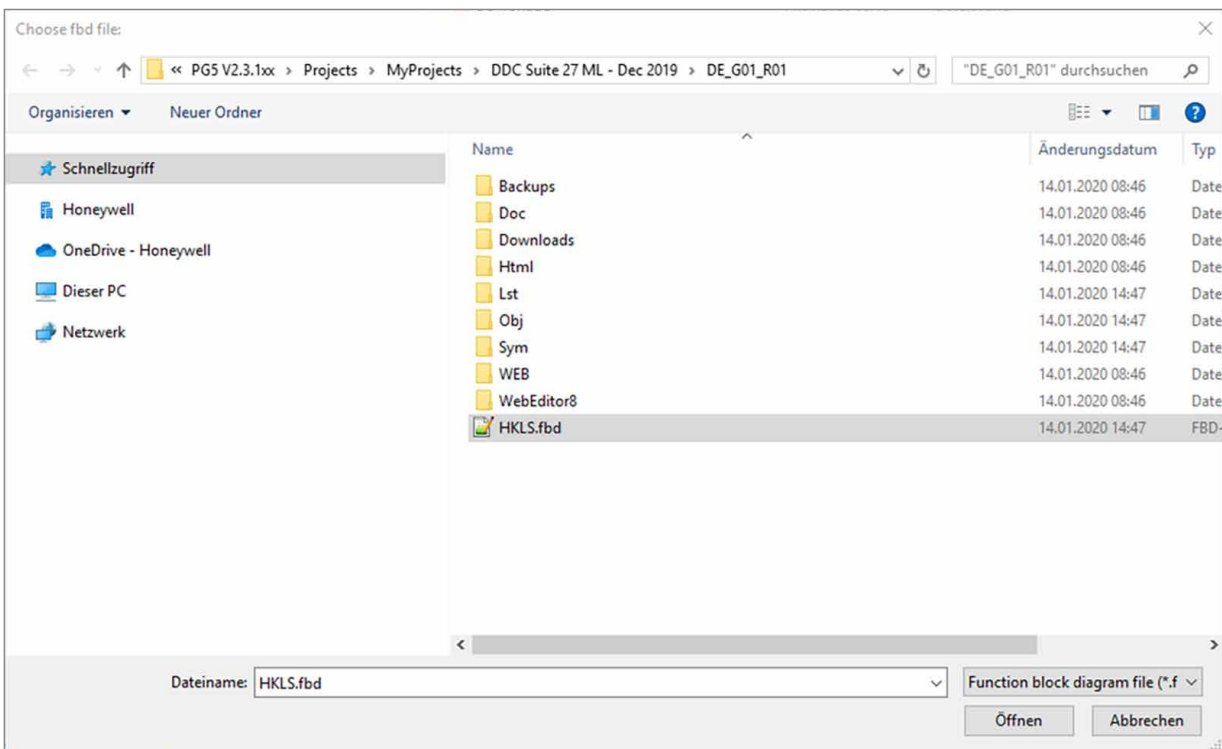


Figure 5: Select an fbd file

Click Open to start reading in the symbols. Depending on the size of the fbd and _global.sy5 files, this may take a few seconds. A progress bar provides information about the current status of the respective steps.

As soon as the tool has finished its work, the following message will appear:

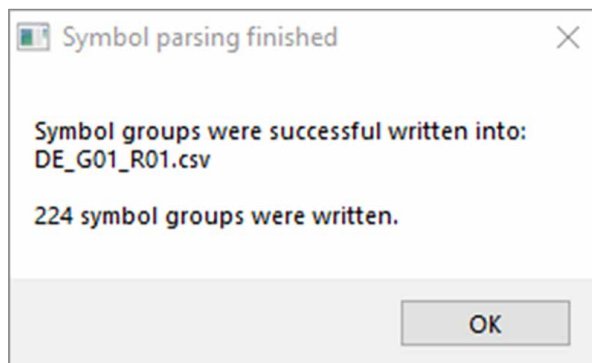


Figure 6: Tool has successfully completed its task

In the device path, a file with the device name is saved for the associated device in the form Device-Name.csv. This file then contains all symbol groups and macro names that are necessary for import into the Saia PCD® Supervisor. An already existing file will be overwritten.

7. Using the tool as an add-on for PG5

The tool can be created as an independent entry in the program files in the PG5 project. For this, call up the add-ons under PG5 → tools and make the following entries:

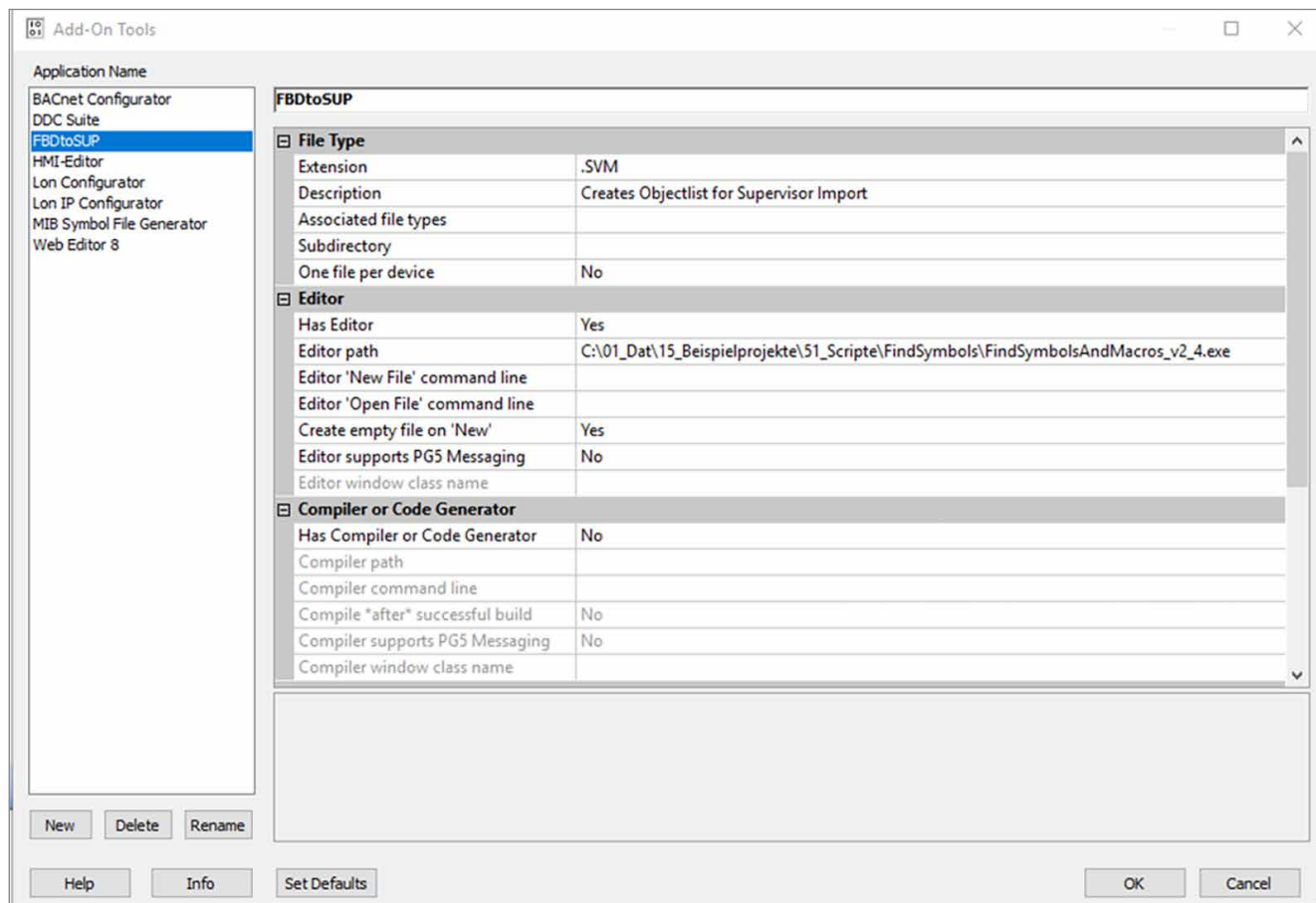


Figure 7: Create add-on

The .SVM file can now be created under the program files. SVM stands for Supervisor Mapping:

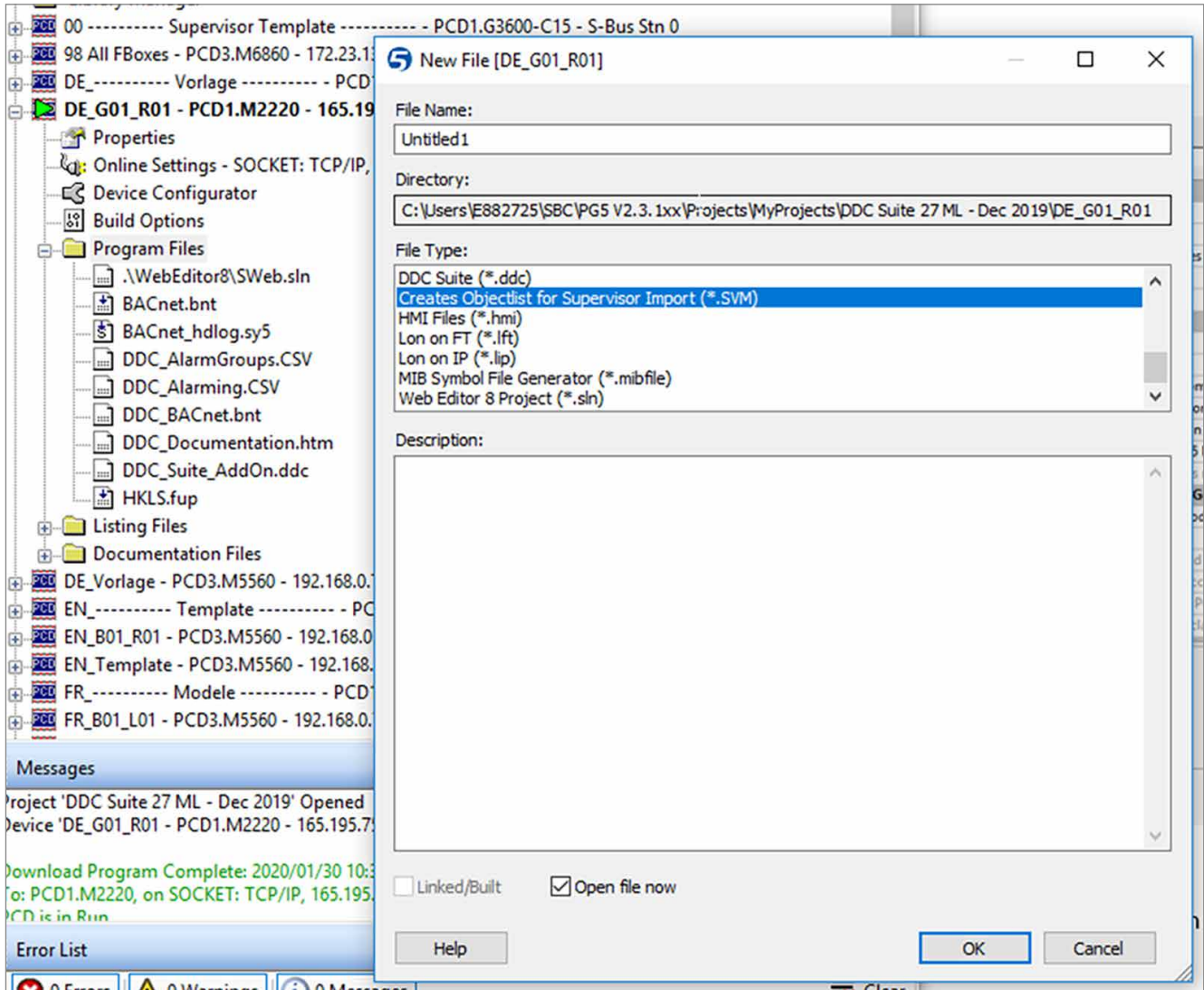


Figure 8: Call the tool via program files

From now on the tool can also be called from the program files.

8. Special features

- The document was produced for version v2.3 of the tool
- Windows 10 Enterprise, 64 Bit, Version 1803

Saia-Burgess Controls AG

Bahnhofstrasse 18 | 3280 Murten, Switzerland
 T +41 26 580 30 00 | F +41 26 580 34 99
 www.saia-pcd.com

support@saia-pcd.com | www.sbc-support.com

2020-04-09 | Technical data and information subject to change.