

How to restore or backup a Web Panel image into a SSD/HDD – Solid State Disc or Hard Disc Drive for PCD7.D51xxTA010 or PCD7.D61xxTA010

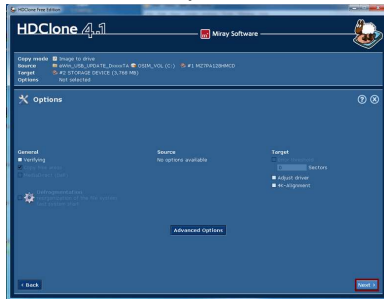
The new Atom devices (PCD7.D51xxTA010 or PCD7.D61xxTA010) are equipped with an internal SSD Solid State Disc where the operating System is Based. For restoring as well for backups of the current system you have to create an USB-Stick which will boot up the Panel. This USB-Stick includes an embedded Windows Operating System as well as the easy Image tool version 1.2.

Step by Step Document:

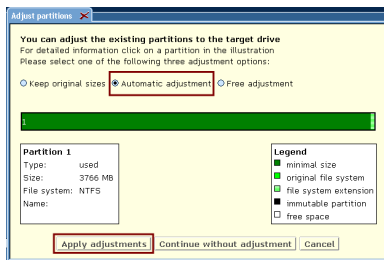
Contents:

- 1.1. Collect all necessary files for Update 2
- 1.2. Install The Application HDClone 2
- 1.3. Restore the USB-Image using HDClone..... 2
- 1.4. Using the created USB-Stick for create or restore the System..... 4
- 1.5. Using the created USB-Stick for restore a backup 5
- 1.6. Using the created USB-Stick for create a backup..... 6

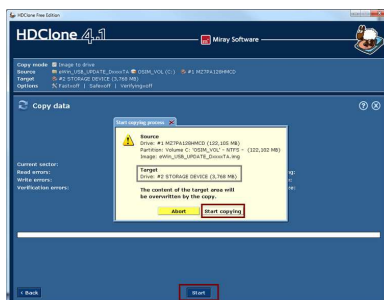
- Normally it is not needed to set special options. You can easily work with the default settings of HDClone so press next.



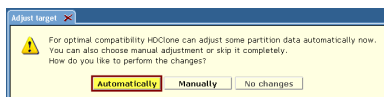
- Now you will get a view if the Image will have place on your USB-Device. Normally you can use the default settings of HDClone which will set the right size of the device automatically.



- Now press start. In the next step all datas which are stored on the target device will be lost it is the last possibility to check if you have selected the right device. If you are sure than press Start copying

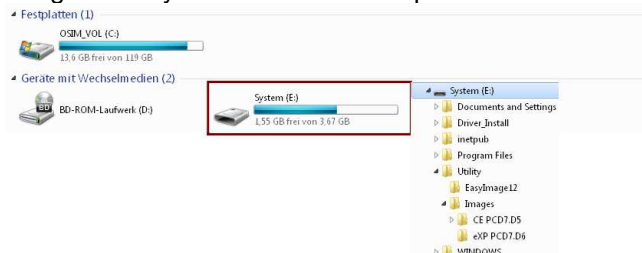


- After the process is finished. HDClone will ask for a auto Adjustment of the USB-Device. You can select automatically so HDClone will manage the new size of the partition size and parameters.



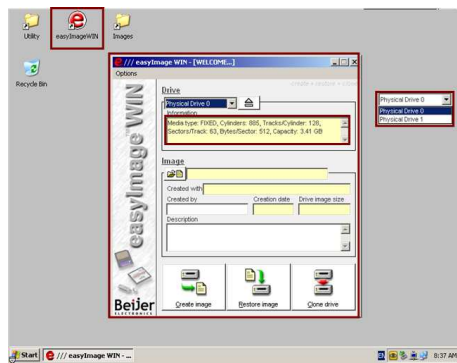
- Close the final report by pressing "Quit HDClone"

- Open the working place and browse into the USB-Device called "System". Load the latest image which you will install on the panel on the USB-Device "<USB>:/Utility/Images/"

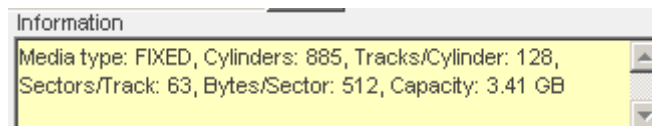


1.4. Using the created USB-Stick for create or restore the System

- 1) If the panel is Windows CE Device you will need an USB-Hub as well as a mouse.
- 2) Connect the created USB-Stick with the panel and do an restart
- 3) The panel will start from the Image of the USB-Device. This image include an embedded Windows XP System.
- 4) Open the easyInstallWin Tool

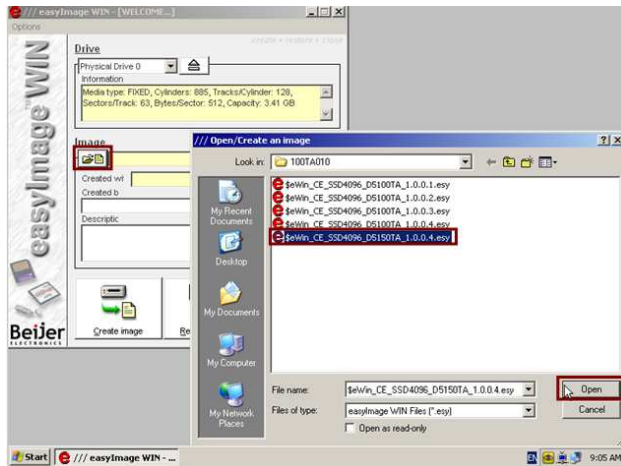


- 5) Check the physical drive by using the information window on the selected device the following actions (Create, Restore or Clone) will be executed.

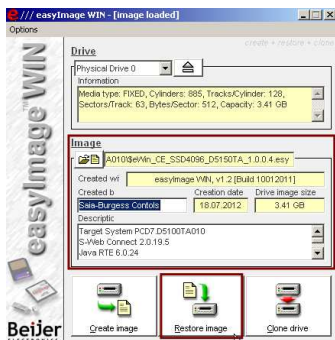


1.5. Using the created USB-Stick for restore a backup

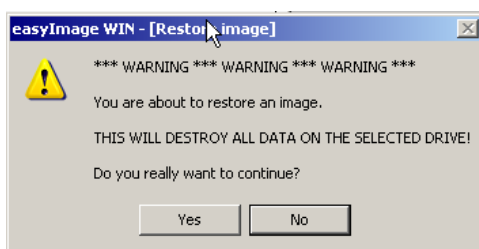
- 1) Open the Image file which you want to restore on the device. It is not possible to restore different System Images like CE or eXP on the not foreseen platform.



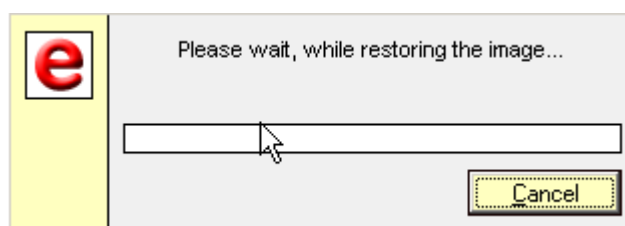
- 2) You can find all image details in the description part. If you want to restore the current loaded image press the button "Restore image"



- 3) All data's on the device which is selected will be lost when you press yes on the warning dialog

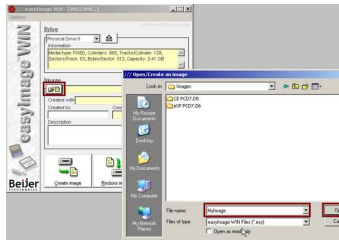


- 4) The application "EasyInstallWin" will install the selected image on the device. After the process you have to restart the panel an. When the panels start agaisnt remove the USB-Device and the new image will be loaded.

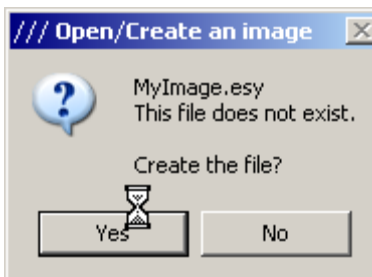


1.6. Using the created USB-Stick for create a backup

- 5) Select the browse button and open the create an image dialog. Enter a Filename for your backup image and press open.



- 6) If the file not exist then you will get an popup dialog where you can create the file. In this case press yes.



- 7) You can enter special information for the image afterwards press the "Create image" Button and the process will start.

