




## Saia PCD® Supervisor

### Description

Saia PCD® Supervisor is a building monitoring and management solution built upon the powerful Niagara 4 platform. It is capable of integrating Saia PCD® controllers, third party devices and internet protocols into a centralised software platform that is designed to manage buildings at an enterprise level.

Saia PCD® Supervisor serves real-time graphical information to standard web-browser clients and also provides server-level functions such as: centralized data logging, archiving, alarming, trending, master scheduling, system-wide database management, and integration with enterprise software applications – all of which can be used for highlighting and investigating energy use within buildings.

In addition, Saia PCD® Supervisor provides a comprehensive, graphical engineering toolset for application development. HTML5 support enables the customisation of user interfaces that are viewable on diverse web-enabled computers, tablets and phones.

Third party device integration using open standard protocols such as BACnet, Modbus, M-Bus and KNX is also supported.

### Features

- Saia PG5® Data Import Wizard allows the easy and fast import of PG5 symbols, alarm lists and HDLog configuration into the Saia PCD® Supervisor.
- Native S-Bus over IP driver capable to access PCD devices including serial gateway (Read Write PCD media, Alarming and HDLog integration).
- HTML5 compliant web framework for full smart device compatibility.
- Supports an unlimited number of users over the Internet / Intranet with a standard web browser, depending on the host PC resources.
- Optional enterprise-level data archival using SQL.
- “Step by step documented history” of database changes, database storage and backup, global time functions, calendar, central scheduling, control and energy management routines.
- Sophisticated alarm processing and routing, including email alarm acknowledgment.
- Access to alarms, logs, graphics, schedules and configuration data with a standard web browser.
- Password protection and security using standard authentication and encryption techniques with optional security supported via an external LDAP connection.
- HTML-based help system that includes comprehensive on-line system documentation.
- Provides online/offline use of the Niagara Framework Workbench graphical configuration tool and a comprehensive Java Object Library.
- Optional direct Ethernet based driver support for BACnet IP, EIB/KNX IP, LON IP, Modbus IP master and slave, M-Bus IP, SNMP and OPC client; additional point blocks for each driver may be purchased - see page 3.
- Enhanced BACnet utility for point propriety and EDE import wizard to engineer BACnet system.
- Saia PG5® – icon gallery static palette available (SVG).

# COMPATIBILITY

Saia PCD® Supervisor provides connectivity to a Saia PCD® system. Compatibility with PG5 projects version V2.1 and V2.2.

## Supported PCD devices:

Saia PCD® with Ethernet Interface for direct connection to Niagara or RS-485 interface for connection to a gateway station, where the gateway station does have an Ethernet connection to Niagara:

- ▶ PCD1.M0160E0
- ▶ PCD1.M2xx0
- ▶ PCD2.M4x60
- ▶ PCD2.M5xx0
- ▶ PCD3.Mxxx0
- ▶ PCD7.D4xxT5x

PCD's with RS-485 interface for connection to a gateway station, where the gateway station does have an Ethernet connection to Niagara:

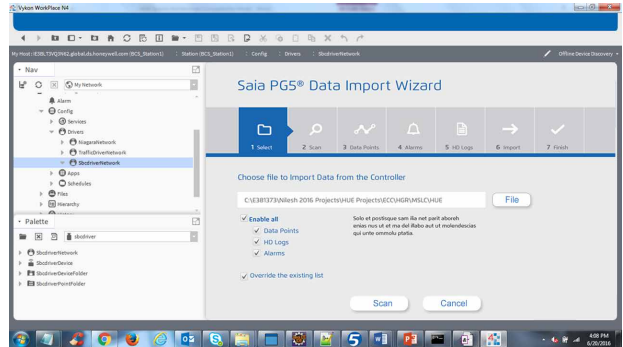
- ▶ PCD1.G/F/Wxxx-xx5 with RS-485 (as slave of a gateway station)

## Access to the following PCD resources:

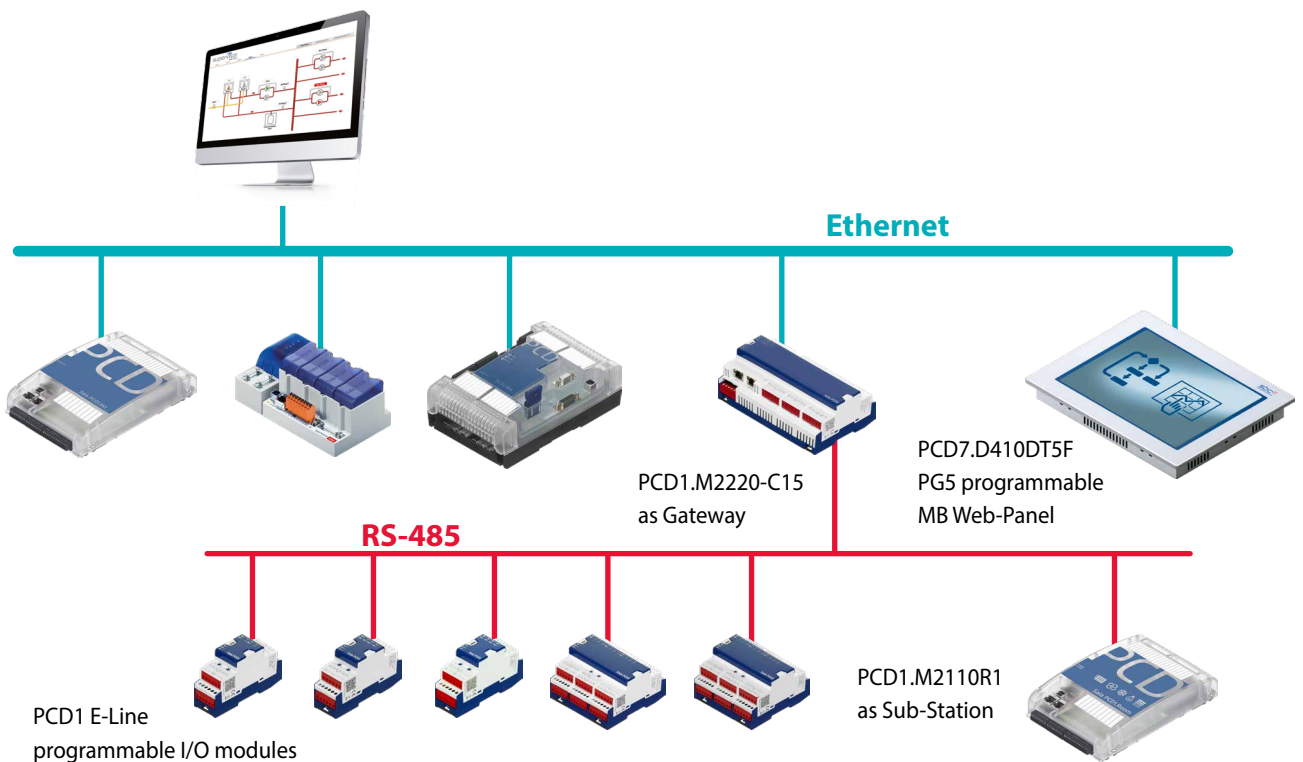
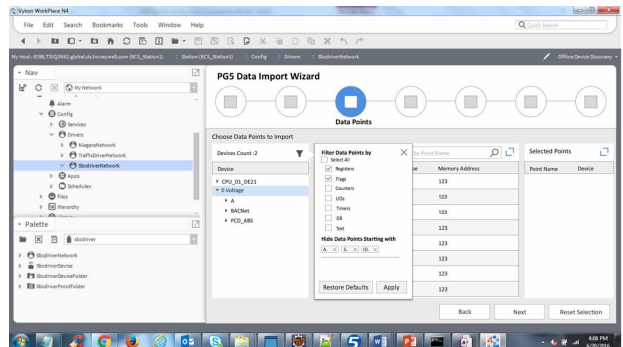
- ▶ Inputs
- ▶ Outputs
- ▶ Flags
- ▶ Register
- ▶ Data block
- ▶ Text
- ▶ Timer
- ▶ Counter
- ▶ Alarming
- ▶ HDLog
- ▶ PCD Status
- ▶ PCD Clock
- ▶ PCD Firmware

## Saia PCD® Import Wizard:

- ▶ Saia PG5® Import Wizard allows the easy and fast import of symbols and alarm lists with alarm texts from a Web Editor8 project and HDLog lists previously defined in PG5 projects into the Saia PCD® Supervisor



- ▶ Filtering functions support import of only selected symbols



- ▶ Ethernet communication to PCD's and on PCD's over RS-485 which are connected behind a gateway.

## ORDER CODES

The Saia PCD® Supervisor license scheme is based around a point count. A point is a single item of information that is stored into the Saia PCD® Supervisor database and in the case of the Saia PCD® system includes Flags, registers, Inputs, Outputs, etc., that you may want to add into Saia PCD® Supervisor.

There are two main categories of point in Saia PCD® Supervisor - genuine SBC points and open points:

### Genuine SBC points

These are points controlled by SBC manufactured controllers (PCD1, PCD2, PCD3 and PCD7) and accessed using the S-Bus Protocol. For this category of device the license is sized on the points you want to monitor. Point discovery is an embedded feature available through the Saia PG5® Import Wizard embedded in the S-Bus driver. SBC devices and networks are not counted for licensing purposes. The main ordering codes are listed below:

<b>PCD8.SUP-500</b>	Saia PCD® Supervisor basic package including SBC S-Bus driver and 500 points database size
<b>PCD8.SUP-2500</b>	Saia PCD® Supervisor basic package including SBC S-Bus driver and 2,500 points database size
<b>PCD8.SUP-10000</b>	Saia PCD® Supervisor basic package including SBC S-Bus driver and 10,000 points database size

In case more points are needed to meet system requirements, the desired Saia PCD® Supervisor database size can be reached with any combination of Starter Kit and the following Point Extensions.

<b>PCD8.SUP-100EXT</b>	Saia PCD® Supervisor additional 100 SBC database points
<b>PCD8.SUP-2500EXT</b>	Saia PCD® Supervisor additional 2,500 SBC database points
<b>PCD8.SUP-5000EXT</b>	Saia PCD® Supervisor additional 5,000 SBC database points
<b>PCD8.SUP-15000EXT</b>	Saia PCD® Supervisor additional 15,000 SBC database points

### Open points

These are points from open protocol equipped devices or subsystems that you wish to integrate straight into Saia PCD® Supervisor. The Saia PCD® Supervisor open driver packs include a selection of standard drivers that you can select to be used to perform head end integration.

Standard drivers are: BACnet IP, EIB/KNX IP, LON IP, Modbus IP master and slave, M-Bus IP, SNMP and OPC client. Open driver packs ordering codes are listed below:

<b>PCD8.SUP-500OPEN</b>	Extend base license with additional 500 open protocols points
<b>PCD8.SUP-2500OPEN</b>	Extend base license with additional 2,500 open protocols points
<b>PCD8.SUP-5000OPEN</b>	Extend base license with additional 5,000 open protocols points
<b>PCD8.SUP-10000OPEN</b>	Extend base license with additional 10,000 open protocols points

Please note that open protocol license management is delivered in a way that as soon as you reach the limit for point count customers need to request license upgrade accordingly.

### Maintenance upgrade options

Saia PCD® Supervisor basic packages include an 18 months maintenance and free upgrade package. This can be extended by purchasing one of the following maintenance upgrade options:

<b>PCD8.SUP-MNT1</b>	Saia PCD® Supervisor maintenance upgrade - additional 1 year
<b>PCD8.SUP-MNT3</b>	Saia PCD® Supervisor maintenance upgrade - additional 3 years
<b>PCD8.SUP-MNT5</b>	Saia PCD® Supervisor maintenance upgrade - additional 5 years

### Extended support options

<b>PCD8.SUP-OPC</b>	Extend the open protocol points with OPC client connectivity
<b>PCD8.SUP-DB-CSV</b>	Extend the capability for the supervisor to interact with Microsoft Excel
<b>PCD8.SUP-DB-SQL</b>	Extend the capability for the supervisor to communicate SQL Server

### Partner license agreements

<b>PCD8.SUP-NAA-STK</b>	Saia PCD® Supervisor annual agreement starter kit
<b>PCD8.SUP-NAA-REN</b>	Saia PCD® Supervisor annual agreement renewal
<b>PCD8.SUP-NAA-UPG</b>	Saia PCD® Supervisor annual agreement upgrade
<b>PCD8.SUP-NAA-ENG</b>	Saia PCD® Supervisor additional engineering license

## PLATFORM REQUIREMENTS

Saia PCD® Supervisor will run on the following operating systems:

Windows 10 (32-bit),  
Windows 10 (64-bit),  
Windows 8.1 Professional/Enterprise/Ultimate (32-bit),  
Windows 8.1 Professional/Enterprise/Ultimate (64-bit),  
Windows 7 Professional/Enterprise/Ultimate (32-bit),  
Windows 7 Professional/Enterprise/Ultimate (64-bit),  
Windows Server 2012 R2 Standard/Enterprise (SP2) (64-bit)

Your PC must comply with the minimum specification for the installed operating system as specified by Microsoft.

In addition to meeting the requirements for the operating system Saia PCD® Supervisor requires the following:

Processor :	Intel® Xeon® CPU E5-2640 x64 (or better), compatible with dual- and quad-core processors
Operating System :	Windows 7 (if N4 supports), 10, 64-bit Windows 8.1 Enterprise, Windows Server 2012 Standard and 2012 R2 Standard
Memory :	4 GB minimum, 8 GB or more recommended for larger system
Free Hard Drive Space :	4 GB minimum, more recommended depending on archiving requirements
Display :	Video card and monitor capable of displaying 1680 × 1050 pixel resolution or greater
Network Support :	Ethernet adapter (10/100 MB with RJ-45 connector)
Connectivity :	Full-time high-speed ISP connection recommended for remote site access (i.e., T1, ADSL, cable modem)

If enterprise-level data archiving is required (optional), one of the following compatible database applications will need to be installed:

MS SQL Server 2012,  
MS SQL Server 2014.

---

## INSTALLATION

Saia PCD® Supervisor is not yet available as a download. Please ask your local SBC representatives.

Once downloaded to your PC/laptop a step-by-step installation program will guide you through the installation process.

### Saia-Burgess Controls AG

Bahnhofstrasse 18 | 3280 Murten, Switzerland  
T +41 26 580 30 00 | F +41 26 580 34 99  
www.saia-pcd.com

support@saia-pcd.com | www.sbc-support.com